

Basic Information

Product Name	Anti-KLF10 Antibody (Clone#22K32)
Gene Name	KLF10
Source	Rabbit
Clonality	Monoclonal
Isotype	IgG
Species Reactivity	human, mouse, rat
Tested Application	WB
Contents	500 ug/ml; Rabbit IgG in phosphate buffered saline, pH 7.4, 150mM NaCl, 0.02% sodium azide, 0.4-0.5 mg/ml BSA and 50% glycerol.
Immunogen	A synthesized peptide derived from human KLF10
Concentration	500 ug/ml
Purification	Affinity-chromatography
Observed MW	53 kDa
Dilution Ratios	Western blot (WB):1:500-2000

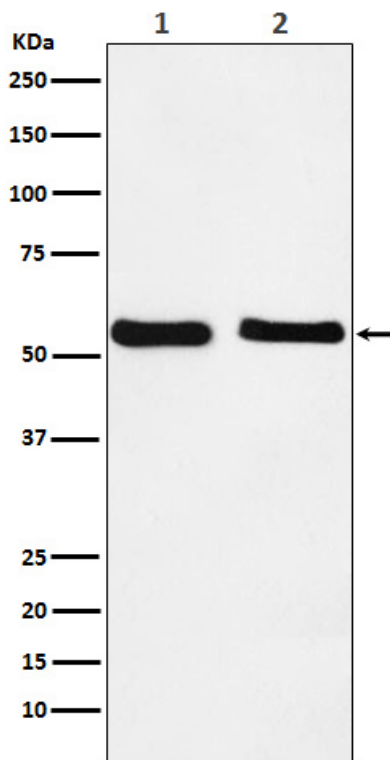
Storage

12 months from date of receipt, -20°C as supplied.

Reference

Anti-KLF10 Antibody (Clone#22K32)被引用在1文献中。

Selected Validation Data



Western blot analysis of KLF10 expression in (1) HepG2 cell lysate;
(2) NIH/3T3 cell lysate.