

## Basic Information

Product Name	Anti-FOSL1 Antibody (Clone#24F71)		
Gene Name	FOSL1		
Source	Rabbit		
Clonality	Monoclonal		
Isotype	IgG		
Species Reactivity	human		
Tested Application	WB, ICC/IF		
Contents	500 ug/ml; Rabbit IgG in phosphate buffered saline, pH 7.4, 150mM NaCl, 0.02% sodium azide, 0.4-0.5 mg/ml BSA and 50% glycerol.		
Immunogen	A synthesized peptide derived from human FRA1		
Concentration	500 ug/ml		
Purification	Affinity-chromatography		
Observed MW	29-39 kDa		
Dilution Ratios	Western blot (WB): 1:500-2000 Immunocytochemistry/Immunofluorescence (ICC/IF):1:50-200		

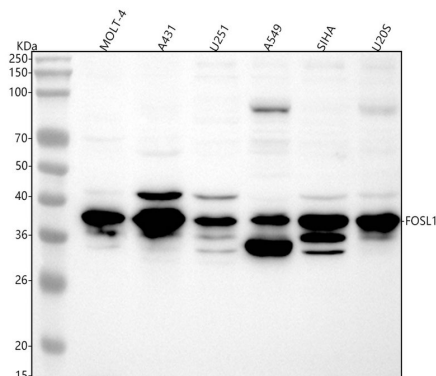
## Storage

12 months from date of receipt, -20°C as supplied.

## Reference

Anti-FOSL1 Antibody (Clone#24F71)被引用在4文献中。

## Selected Validation Data



Western blot analysis of anti-FOSL1 antibody (M03927-1). The sample well of each lane was loaded with 30 ug of sample under reducing conditions.

Lane 1: human MOLT-4 whole cell lysates,

Lane 2: human A431 whole cell lysates,

Lane 3: human U251 whole cell lysates,

Lane 4: human A549 whole cell lysates,

Lane 5: human SiHa whole cell lysates,

Lane 6: human U2OS whole cell lysates.

After electrophoresis, proteins were transferred to a membrane.

Then the membrane was incubated with rabbit anti-FOSL1 antigen

affinity purified monoclonal antibody (M03927-1) at a dilution of

1:1000 and probed with a goat anti-rabbit IgG-HRP secondary

antibody (Catalog # BA1054). The signal is developed using ECL Plus

Western Blotting Substrate (Catalog # AR1197). A specific band was

detected for FOSL1 at approximately 39 kDa. The expected band

size for FOSL1 is at 29 kDa.