

Basic Information

Product Name	Anti-CD10/MME Antibody (Clone#OTI3D11)
Gene Name	MME
Source	Mouse
Clonality	Monoclonal
Isotype	IgG2a
Species Reactivity	human, mouse, rat
Tested Application	WB, IHC, FCM
Contents	PBS (PH 7.3) containing 1% BSA, 50% glycerol and 0.02% sodium azide.
Immunogen	Full length human recombinant protein of human MME(NP_009218) produced in HEK293T cell.
Concentration	500 ug/ml
Purification	Purified from mouse ascites fluids or tissue culture supernatant by affinity chromatography (protein A/G)
Observed MW	85.3 kDa
Dilution Ratios	Western blot (WB): 1:2000 Immunohistochemistry (IHC):1:150 Flow cytometry (FCM): 1:100

Storage

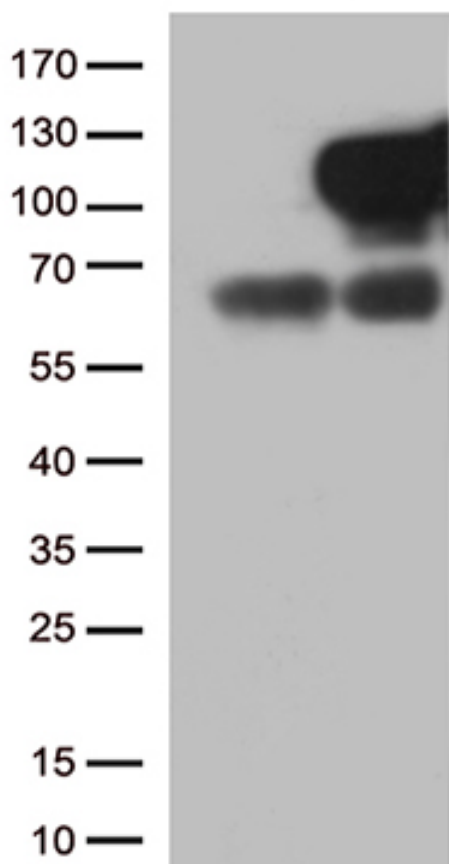
Stable for 12 months from date of receipt. Store at -20°C as received.

Background Information

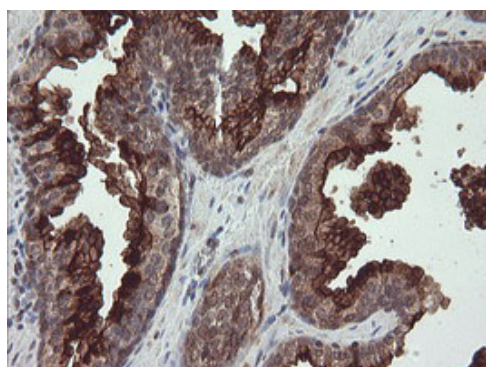
This gene encodes a common acute lymphocytic leukemia antigen that is an important cell surface marker in the diagnosis of human acute lymphocytic leukemia (ALL). This protein is present on leukemic cells of pre-B phenotype, which represent 85% of cases of ALL. This protein is not restricted to leukemic cells, however, and is found on a variety of normal tissues. It is a glycoprotein that is particularly abundant in kidney, where it is present on the brush border of proximal tubules and on glomerular epithelium. The protein is a neutral endopeptidase that cleaves peptides at the amino side of hydrophobic residues and inactivates several peptide hormones including glucagon, enkephalins, substance P, neurotensin, oxytocin, and bradykinin. This gene, which encodes a 100-kD type II transmembrane glycoprotein, exists in a single copy of greater than 45 kb. The 5' untranslated region of this gene is alternatively

spliced, resulting in four separate mRNA transcripts. The coding region is not affected by alternative splicing. [provided by RefSeq]

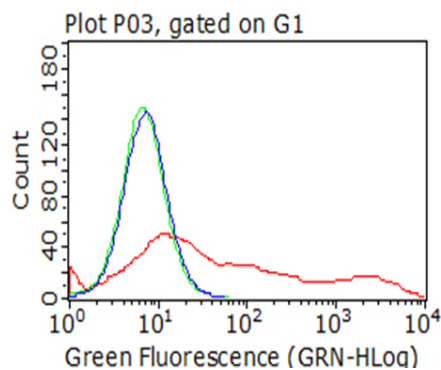
Selected Validation Data



HEK293T cells were transfected with the pCMV6-ENTRY control (Left lane) or pCMV6-ENTRY MME (Right lane) cDNA for 48 hrs and lysed. Equivalent amounts of cell lysates (5 ug per lane) were separated by SDS-PAGE and immunoblotted with anti-MME (Cat# M04065-3)(1:500).



Immunohistochemical staining of paraffin-embedded Human prostate tissue within the normal limits using anti-MME mouse monoclonal antibody. (Heat-induced epitope retrieval by 10mM citric buffer, pH6.0, 100°C for 10min, M04065-3)



Flow cytometric analysis of living 293T cells transfected with MME overexpression plasmid (Red)/empty vector (Blue) using anti-MME antibody. Cells incubated with a non-specific antibody (Green) were used as isotype control (1:100).