

Basic Information

Product Name	Anti-CD23/FCER2 Antibody (Clone#OTI2B6)
Gene Name	FCER2
Source	Mouse
Clonality	Monoclonal
Isotype	IgG1
Species Reactivity	human
Tested Application	WB, IHC, FCM
Contents	PBS (PH 7.3) containing 1% BSA, 50% glycerol and 0.02% sodium azide.
Immunogen	Human recombinant protein fragment corresponding to amino acids 48-321 of human FCER2 (NP_001993) produced in SF9 cell.
Concentration	500 ug/ml
Purification	Purified from mouse ascites fluids or tissue culture supernatant by affinity chromatography (protein A/G)
Observed MW	36.3 kDa
Dilution Ratios	Western blot (WB): 1:2000 Immunohistochemistry (IHC):1:150 Flow Cytometry(FCM): 1:100

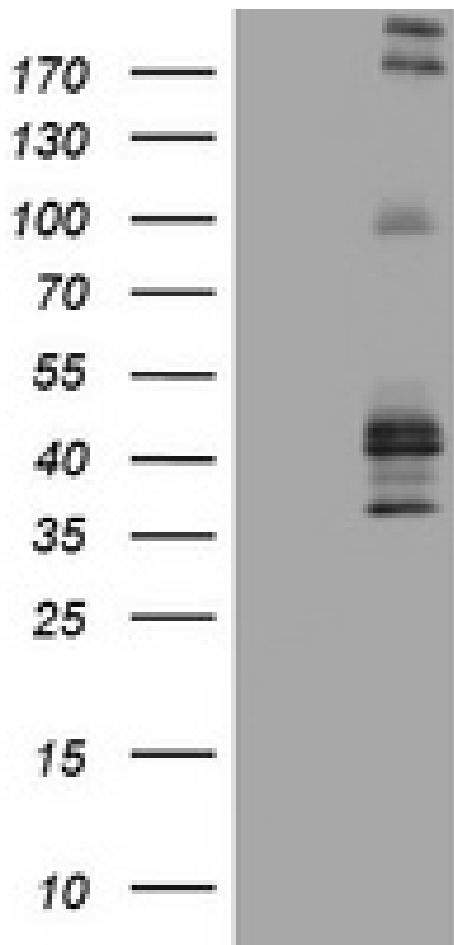
Storage

Stable for 12 months from date of receipt. Store at -20°C as received.

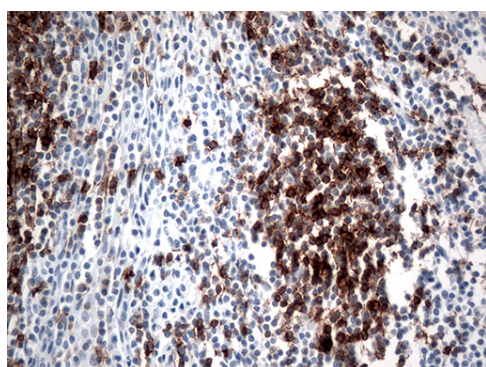
Background Information

The protein encoded by this gene is a B-cell specific antigen, and a low-affinity receptor for IgE. It has essential roles in B cell growth and differentiation, and the regulation of IgE production. This protein also exists as a soluble secreted form, then functioning as a potent mitogenic growth factor. Alternatively spliced transcript variants encoding different isoforms have been described for this gene. [provided by RefSeq, Jul

Selected Validation Data



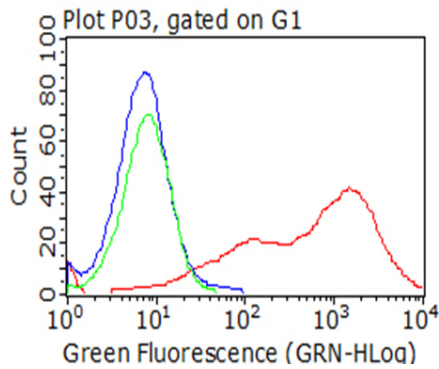
HEK293T cells were transfected with the pCMV6-ENTRY control (Left lane) or pCMV6-ENTRY FCER2 (Right lane) cDNA for 48 hrs and lysed. Equivalent amounts of cell lysates (5 ug per lane) were separated by SDS-PAGE and immunoblotted with anti-FCER2 (Cat# MA04237)(1:2000).



Immunohistochemical staining of paraffin-embedded Human tonsil within the normal limits using anti-FCER2 mouse monoclonal antibody. (Heat-induced epitope retrieval by 1mM EDTA in 10mM Tris buffer (pH8.5) at 120°C for 3min, MA04237) (1:500)

**Anti-CD23/FCER2 Antibody
(Clone#OTI2B6)**

Catalog Number: M04237-4



Flow cytometric analysis of living 293T cells transfected with FCER2 overexpression plasmid , Red)/empty vector (Blue) using anti-FCER2 antibody. Cells incubated with a non-specific antibody (Green) were used as isotype control (1:100).