

Basic Information

Product Name	Anti-RAB11B Antibody (Clone#6C5)	
Gene Name	RAB11B	
Source	Mouse	
Clonality	Monoclonal	
Isotype	IgG2b	
Species Reactivity	human, mouse, rat	
Tested Application	WB, FCM, ICC/IF	
Contents	500 ug/ml antibody with PBS, 0.02% NaN3, 1 mg/ml BSA and 50% glycerol.	
Immunogen	A synthetic peptide corresponding to a sequence at the C-terminus of human RAB11B, which shares 97.4% and 100% amino acid (aa) sequence identity with mouse and rat RAB11B, respectively.	
Concentration	500 ug/ml	
Purification	protein G purified.	
Observed MW	24 kDa	
Dilution Ratios	Western blot (WB):	1:500-2000
	Immunocytochemistry/Immunofluorescence (ICC/IF):	1:50-400
	Flow Cytometry (Fixed):	1:50-200

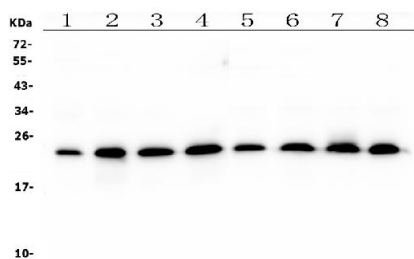
Storage

12 months from date of receipt, -20°C as supplied.

Background Information

Ras-related protein Rab-11B is a protein that in humans is encoded by the RAB11B gene. It is mapped to 19p13.2. The Ras superfamily of small GTP-binding proteins, which includes the Ras, Ral, Rho, Rap, and Rab families, is involved in controlling a diverse set of essential cellular functions. The Rab family, including RAB11B, appears to play a critical role in regulating exocytotic and endocytotic pathways.

Selected Validation Data



Western blot analysis of RAB11B using anti-RAB11B antibody (M04526). The sample well of each lane was loaded with 30 ug of sample under reducing conditions.

Lane 1: human HEK293 tissue lysates,

Lane 2: human Hela whole cell lysates,

Lane 3: human A549 whole cell lysates,

Lane 4: human placenta whole cell lysates,

Lane 5: human HepG2 whole cell lysates,

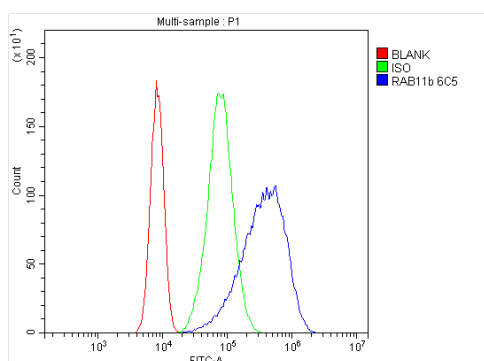
Lane 6: human Caco-2 whole cell lysates,

Lane 7: human THP-1 whole cell lysates,

Lane 8: human Raji whole cell lysates.

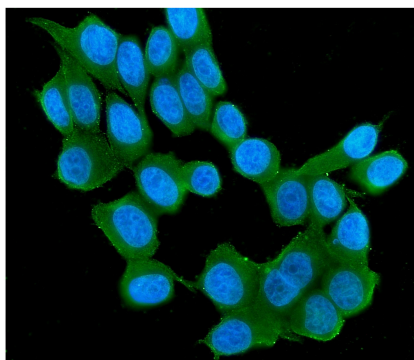
After electrophoresis, proteins were transferred to a membrane.

Then the membrane was incubated with mouse anti-RAB11B antigen affinity purified monoclonal antibody (M04526) at a dilution of 1:1000 and probed with a goat anti-mouse IgG-HRP secondary antibody (Catalog # BA1050). The signal is developed using ECL Plus Western Blotting Substrate (Catalog # AR1197). A specific band was detected for RAB11B at approximately 24 kDa. The expected band size for RAB11B is at 24 kDa.



Flow Cytometry analysis of Caco-2 cells using anti-RAB11B antibody (M04526).

Overlay histogram showing Caco-2 cells stained with M04526 (Blue line). To facilitate intracellular staining, cells were fixed with 4% paraformaldehyde and permeabilized with permeabilization buffer. The cells were blocked with 10% normal goat serum. And then incubated with mouse anti-RAB11B Antibody (M04526) at 1:100 dilution for 30 min at 20°C. Fluoro488 conjugated goat anti-mouse IgG (BA1126) was used as secondary antibody at 1:100 dilution for 30 minutes at 20°C. Isotype control antibody (Green line) was mouse IgG at 1:100 dilution used under the same conditions. Unlabelled sample without incubation with primary antibody and secondary antibody (Red line) was used as a blank control.



ICC/IF analysis of RAB11B using anti-RAB11B antibody (M04526). RAB11B was detected in an immunocytochemical section of MCF-7 cells. The section was incubated with mouse anti-RAB11B Antibody (M04526) at a dilution of 1:100. Fluoro488-conjugated Anti-mouse IgG Secondary Antibody (green)(Catalog#BA1126) was used as secondary antibody. The section was counterstained with DAPI (Catalog # AR1176) (Blue).