

## Basic Information

<b>Product Name</b>	Anti-PIN4 Antibody (Clone#OTI7H2)
<b>Gene Name</b>	PIN4
<b>Source</b>	Mouse
<b>Clonality</b>	Monoclonal
<b>Isotype</b>	IgG1
<b>Species Reactivity</b>	human, mouse, rat
<b>Tested Application</b>	IHC, WB
<b>Contents</b>	PBS (PH 7.3) containing 1% BSA, 50% glycerol and 0.02% sodium azide.
<b>Immunogen</b>	Full length human recombinant protein of human PIN4(NP_006214) produced in E.coli.
<b>Concentration</b>	500 ug/ml
<b>Purification</b>	Purified from mouse ascites fluids or tissue culture supernatant by affinity chromatography (protein A/G)
<b>Observed MW</b>	16.4 kDa
<b>Dilution Ratios</b>	Western blot (WB): 1:2000 Immunohistochemistry (IHC):1:150

## Storage

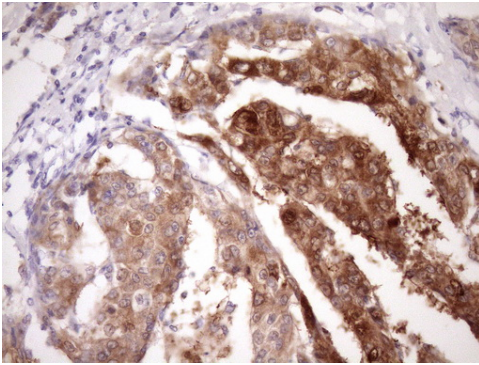
Stable for 12 months from date of receipt. Store at -20°C as received.

## Background Information

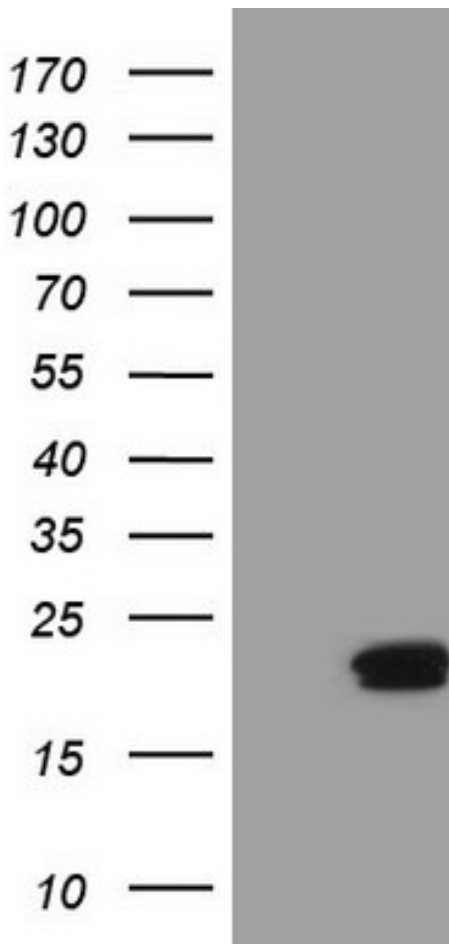
This gene encodes a member of the parvulin subfamily of the peptidyl-prolyl cis/trans isomerase protein family. The encoded protein catalyzes the isomerization of peptidylprolyl bonds, and may play a role in the cell cycle, chromatin remodeling, and/or ribosome biogenesis. The encoded protein may play an additional role in the mitochondria.

[provided by RefSeq, Dec 2009]

## Selected Validation Data



Immunohistochemical staining of paraffin-embedded Carcinoma of Human liver tissue using anti-PIN4 mouse monoclonal antibody. (Heat-induced epitope retrieval by Tris-EDTA, pH8.0, M05181) (1:150)



HEK293T cells were transfected with the pCMV6-ENTRY control (Left lane) or pCMV6-ENTRY PIN4 (Right lane) cDNA for 48 hrs and lysed. Equivalent amounts of cell lysates (5 ug per lane) were separated by SDS-PAGE and immunoblotted with anti-PIN4 (Cat# M05181)(1:2000).