

## Basic Information

<b>Product Name</b>	Anti-Beta Tubulin/TUBB Antibody (Clone#17T13)	
<b>Gene Name</b>	TUBB	
<b>Source</b>	Mouse	
<b>Clonality</b>	Monoclonal	
<b>Isotype</b>	IgG1	
<b>Species Reactivity</b>	human, mouse, rat, chicken, hamster	
<b>Tested Application</b>	WB, IHC, ICC/IF	
<b>Contents</b>	Mouse IgG in phosphate buffered saline, pH 7.4, 150mM NaCl, 0.02% sodium azide and 50% glycerol, 0.5mg/ml BSA.	
<b>Immunogen</b>	A synthesized peptide derived from human beta Tubulin	
<b>Concentration</b>	500 ug/ml	
<b>Purification</b>	Affinity-chromatography	
<b>Observed MW</b>	50 kDa	
<b>Dilution Ratios</b>	Western blot (WB): 1:3000-10000 Immunohistochemistry (IHC): 1:50-200 Immunocytochemistry/Immunofluorescence (ICC/IF):1:50-200	

## Storage

12 months from date of receipt, -20°C as supplied. 6 months 2 to 8°C after reconstitution. Avoid repeated freezing and thawing.

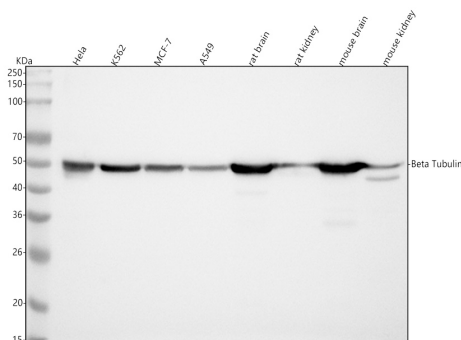
## Background Information

Tubulin beta chain is a protein that in humans is encoded by the TUBB gene. This gene encodes a beta tubulin protein. This protein forms a dimer with alpha tubulin and acts as a structural component of microtubules. Mutations in this gene cause cortical dysplasia, complex, with other brain malformations 6. Alternative splicing results in multiple splice variants. There are multiple pseudogenes for this gene on chromosomes 1,6,7,8,9, and 13.

## Reference

Anti-Beta Tubulin/TUBB Antibody (Clone#17T13)被引用在2文献中。

## Selected Validation Data



Western blot analysis of anti-Beta Tubulin/TUBB antibody

(M05613-5). The sample well of each lane was loaded with 30 ug of sample under reducing conditions.

Lane 1: human Hela whole cell lysates,

Lane 2: human K562 whole cell lysates,

Lane 3: human MCF-7 whole cell lysates,

Lane 4: human A549 whole cell lysates,

Lane 5: rat brain tissue lysates,

Lane 6: rat kidney tissue lysates,

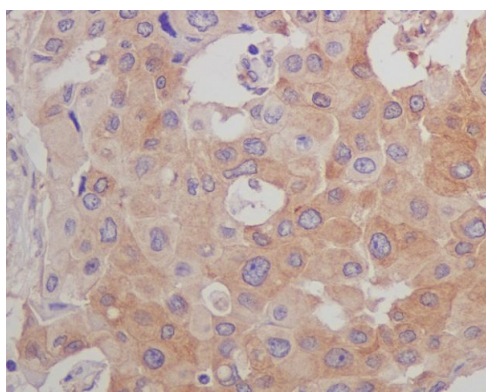
Lane 7: mouse brain tissue lysates,

Lane 8: mouse kidney tissue lysates.

After electrophoresis, proteins were transferred to a membrane.

Then the membrane was incubated with mouse anti-Beta Tubulin/TUBB antigen affinity purified monoclonal antibody

(M05613-5) at a dilution of 1:1000 and probed with a goat anti-mouse IgG-HRP secondary antibody (Catalog # BA1050). The signal is developed using ECL Plus Western Blotting Substrate (Catalog # AR1197). A specific band was detected for Beta Tubulin/TUBB at approximately 50 kDa. The expected band size for Beta Tubulin/TUBB is at 50 kDa.



Immunohistochemical analysis of paraffin-embedded human breast carcinoma, using beta Tubulin Mouse Monoclonal Antibody.

Product datasheet

## Anti-Beta Tubulin/TUBB Antibody (Clone#17T13)

**Catalog Number: M05613-5**

**BOSTER**<sup>®</sup>

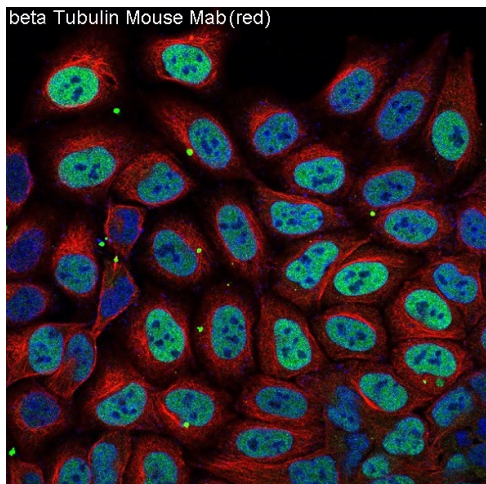
antibody and ELISA experts

**BOSTER BIOLOGICAL TECHNOLOGY**

Building C21, 3rd to 5th Floors, Optics Valley Biopharmaceutical Accelerator,  
East Lake High-Tech Development Zone, Wuhan.

**Web:** [www.boster.com](http://www.boster.com) **Phone:** 027-67845390/1/2 **Email:** [boster@boster.com](mailto:boster@boster.com)

beta Tubulin Mouse Mab(red)



Immunofluorescent analysis of HeLa cells, using beta Tubulin mAb.