

Basic Information

Product Name	Anti-NEGR1 Antibody (Clone#OTI3G8)
Gene Name	NEGR1
Source	Mouse
Clonality	Monoclonal
Isotype	IgG1
Species Reactivity	human, mouse, rat
Tested Application	IHC, WB
Contents	PBS (PH 7.3) containing 1% BSA, 50% glycerol and 0.02% sodium azide.
Immunogen	Human recombinant protein fragment corresponding to amino acids 80-205 of human NEGR1 (NP_776169) produced in E.coli.
Concentration	500 ug/ml
Purification	Purified from mouse ascites fluids or tissue culture supernatant by affinity chromatography (protein A/G)
Dilution Ratios	Western blot (WB): 1:2000 Immunohistochemistry (IHC):1:150

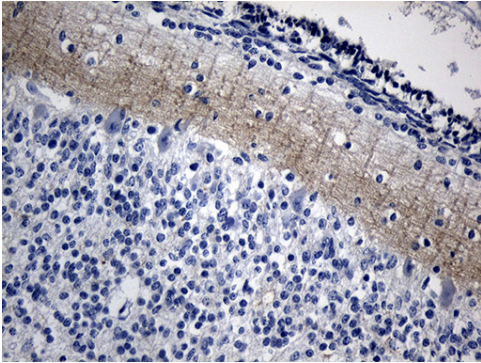
Storage

Stable for 12 months from date of receipt. Store at -20°C as received.

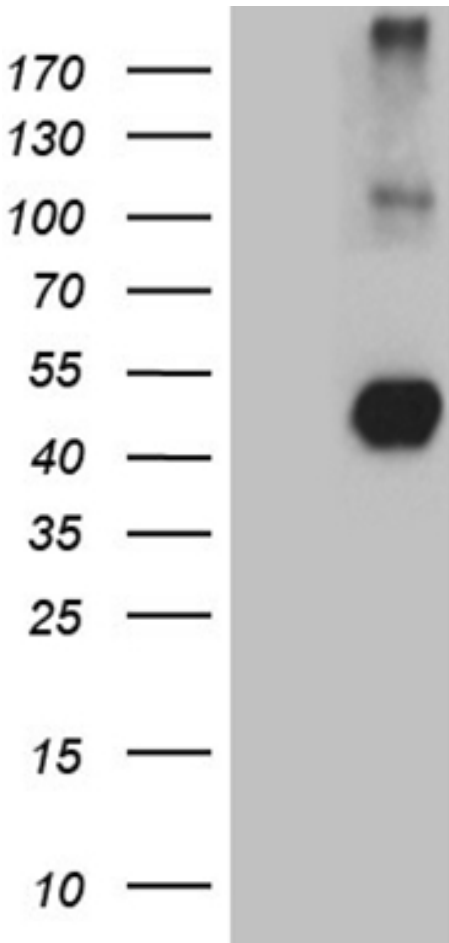
Background Information

Predicted to act upstream of or within several processes, including feeding behavior; locomotory behavior; and positive regulation of neuron projection development. Predicted to be located in extracellular region and plasma membrane.?

Selected Validation Data



Immunohistochemical staining of paraffin-embedded Human embryonic cerebellum within the normal limits using anti-NEGR1 mouse monoclonal antibody. (Heat-induced epitope retrieval by 1mM EDTA in 10mM Tris buffer (pH8.5) at 120°C for 3min, M06730) (1:150).



HEK293T cells were transfected with the pCMV6-ENTRY control (Left lane) or pCMV6-ENTRY NEGR1 (Right lane) cDNA for 48 hrs and lysed. Equivalent amounts of cell lysates (5 ug per lane) were separated by SDS-PAGE and immunoblotted with anti-NEGR1 (Cat# M06730)(1:2000).