

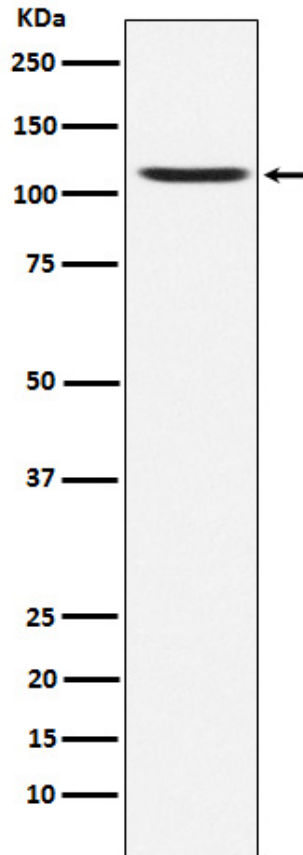
## Basic Information

Product Name	Anti-GLUR4/GRIA4 Antibody (Clone#21G28)
Gene Name	GRIA4
Source	Rabbit
Clonality	Monoclonal
Isotype	IgG
Species Reactivity	human, mouse, rat
Tested Application	WB, FCM
Contents	500 ug/ml; Rabbit IgG in phosphate buffered saline, pH 7.4, 150mM NaCl, 0.02% sodium azide, 0.4-0.5 mg/ml BSA and 50% glycerol.
Immunogen	A synthesized peptide derived from human GluA4
Concentration	500 ug/ml
Purification	Affinity-chromatography
Observed MW	101 kDa
Dilution Ratios	Western blot (WB): 1:500-2000 Flow Cytometry (FCM):1:50

## Storage

12 months from date of receipt, -20°C as supplied.

## Selected Validation Data



Western blot analysis of Ionotropic Glutamate receptor 4 expression in SH-SY5Y cell lysate.