

Basic Information

Product Name	Anti-Histone H2B/H2BC21 (mono methyl K116) Antibody (Clone#27H07)	
Gene Name	H2BC21	
Source	Rabbit	
Clonality	Monoclonal	
Isotype	IgG	
Species Reactivity	human, mouse, rat	
Tested Application	WB, IHC, ICC/IF	
Contents	500 ug/ml; Rabbit IgG in phosphate buffered saline, pH 7.4, 150mM NaCl, 0.02% sodium azide, 0.4-0.5 mg/ml BSA and 50% glycerol.	
Immunogen	A synthesized peptide derived from human Histone H2B (mono methyl K116)	
Concentration	500 ug/ml	
Purification	Affinity-chromatography	
Observed MW	14 kDa	
Dilution Ratios	Western blot (WB):	1:500-2000
	Immunohistochemistry (IHC):	1:50-200
	Immunocytochemistry/Immunofluorescence (ICC/IF):	1:50-200

Storage

12 months from date of receipt, -20°C as supplied.

Selected Validation Data

Product datasheet

Anti-Histone H2B/H2BC21 (mono methyl K116) Antibody (Clone#27H07)

Catalog Number: M07286-3

BOSTER[®]

antibody and ELISA experts

BOSTER BIOLOGICAL TECHNOLOGY

Building C21, 3rd to 5th Floors, Optics Valley Biopharmaceutical Accelerator,
East Lake High-Tech Development Zone, Wuhan.

Web: www.boster.com **Phone:** 027-67845390/1/2 **Email:** boster@boster.com

KDa

250

150

100

75

50

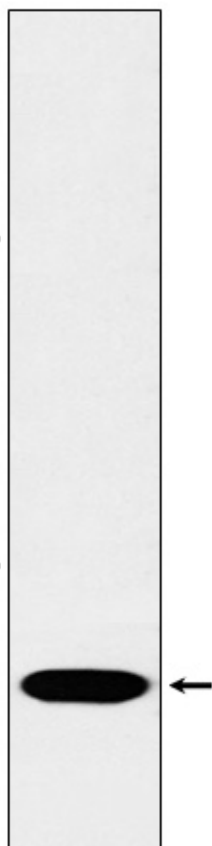
37

25

20

15

10



Western blot analysis of Histone H2B (mono methyl K116) expression in HeLa cell lysate.