

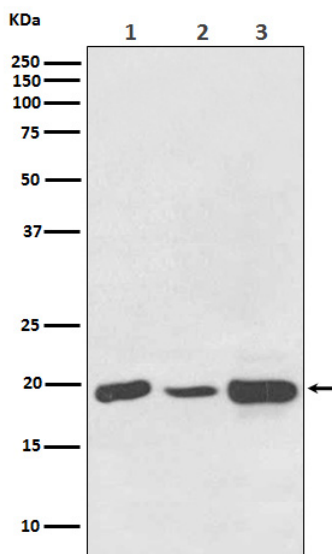
Basic Information

Product Name	Anti-NDUFB8 Antibody (Clone#19N14)	
Gene Name	NDUFB8	
Source	Rabbit	
Clonality	Monoclonal	
Isotype	IgG	
Species Reactivity	human, mouse, rat	
Tested Application	WB, IHC, ICC/IF, IP, FCM	
Contents	500 ug/ml; Rabbit IgG in phosphate buffered saline, pH 7.4, 150mM NaCl, 0.02% sodium azide, 0.4-0.5 mg/ml BSA and 50% glycerol.	
Immunogen	A synthesized peptide derived from human NDUFB8	
Concentration	500 ug/ml	
Purification	Affinity-chromatography	
Observed MW	19-22 kDa	
Dilution Ratios	Western blot (WB):	1:500-2000
	Immunohistochemistry (IHC):	1:50-200
	Immunocytochemistry/Immunofluorescence (ICC/IF):	1:50-200
	ImmunoPrecipitation (IP):	1:30
	Flow Cytometry (FCM):	1:50

Storage

12 months from date of receipt, -20°C as supplied.

Selected Validation Data



Western blot analysis of NDUFB8 expression in (1) HeLa cell lysate; (2) NIH/3T3 cell lysate; (3) PC12 cell lysate.