

Basic Information

Product Name	Anti-NAP1/AZI2 Antibody (Clone#30A13)
Gene Name	AZI2
Source	Rabbit
Clonality	Monoclonal
Isotype	IgG
Species Reactivity	human, mouse, rat
Tested Application	WB, ICC/IF
Contents	500 ug/ml; Rabbit IgG in phosphate buffered saline, pH 7.4, 150mM NaCl, 0.02% sodium azide, 0.4-0.5 mg/ml BSA and 50% glycerol.
Immunogen	A synthesized peptide derived from human TAF3
Concentration	500 ug/ml
Purification	Affinity-chromatography
Observed MW	45 kDa
Dilution Ratios	Western blot (WB): 1:500-2000 Immunocytochemistry/Immunofluorescence (ICC/IF):1:50-200

Storage

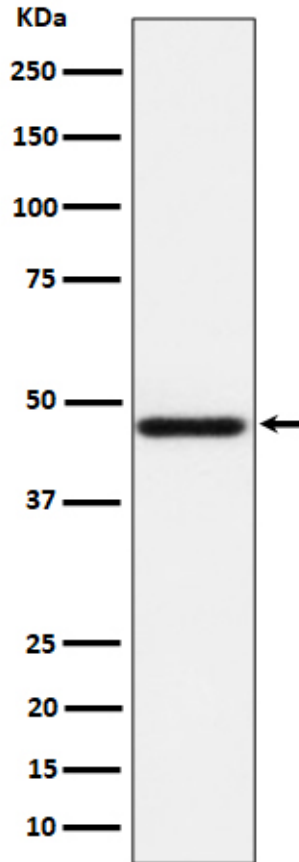
12 months from date of receipt, -20°C as supplied.

Reference

Anti-NAP1/AZI2 Antibody (Clone#30A13)被引用在1文献中。

Selected Validation Data

Western blot analysis of AZI2 expression in HeLa cell lysate.



Immunofluorescent analysis using the Antibody.

