

Basic Information

Product Name	Anti-RORB Antibody (Clone#OTI4B12)
Gene Name	RORB
Source	Mouse
Clonality	Monoclonal
Isotype	IgG1
Species Reactivity	human, mouse, rat
Tested Application	WB
Contents	PBS (PH 7.3) containing 1% BSA, 50% glycerol and 0.02% sodium azide.
Immunogen	Human recombinant protein fragment corresponding to amino acids 1-260 of human RORB(NP_008845) produced in E.coli.
Concentration	500 ug/ml
Purification	Purified from mouse ascites fluids or tissue culture supernatant by affinity chromatography (protein A/G)
Observed MW	53 kDa
Dilution Ratios	Western blot (WB):1:2000

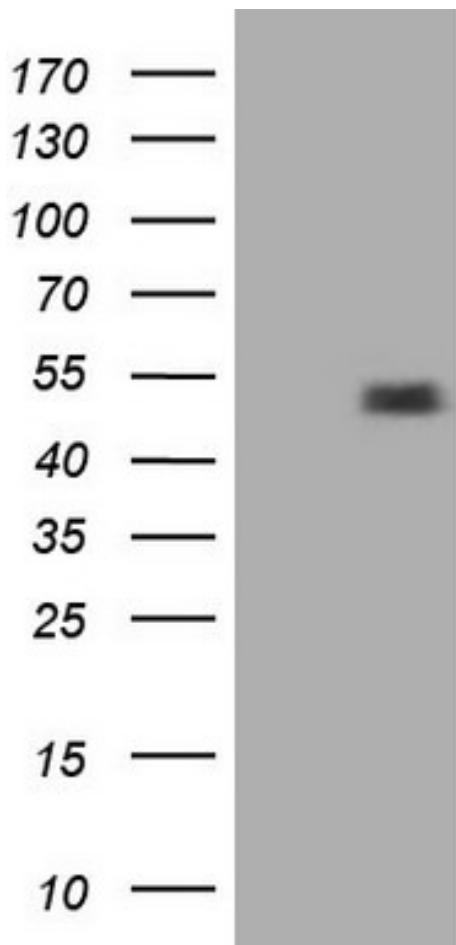
Storage

Stable for 12 months from date of receipt. Store at -20°C as received.

Background Information

The protein encoded by this gene is a member of the NR1 subfamily of nuclear hormone receptors. It is a DNA-binding protein that can bind as a monomer or as a homodimer to hormone response elements upstream of several genes to enhance the expression of those genes. The encoded protein has been shown to interact with NM23-2, a nucleoside diphosphate kinase involved in organogenesis and differentiation, and to help regulate the expression of some genes involved in circadian rhythm. [provided by RefSeq, Feb 2014]

Selected Validation Data



HEK293T cells were transfected with the pCMV6-ENTRY control (Left lane) or pCMV6-ENTRY RORB (Right lane) cDNA for 48 hrs and lysed. Equivalent amounts of cell lysates (5 ug per lane) were separated by SDS-PAGE and immunoblotted with anti-RORB.