

## Basic Information

<b>Product Name</b>	Anti-AMY1A Antibody (Clone#23A54)
<b>Gene Name</b>	AMY1A
<b>Source</b>	Rabbit
<b>Clonality</b>	Monoclonal
<b>Isotype</b>	IgG
<b>Species Reactivity</b>	human
<b>Tested Application</b>	WB
<b>Contents</b>	500 ug/ml; Rabbit IgG in phosphate buffered saline, pH 7.4, 150mM NaCl, 0.02% sodium azide, 0.4-0.5 mg/ml BSA and 50% glycerol.
<b>Immunogen</b>	A synthesized peptide derived from human Salivary alpha amylase
<b>Concentration</b>	500 ug/ml
<b>Purification</b>	Affinity-chromatography
<b>Observed MW</b>	58 kDa
<b>Dilution Ratios</b>	Western blot (WB):1:500-2000

## Storage

12 months from date of receipt, -20°C as supplied.

## Background Information

Amylase is an enzyme that catalyses the breakdown of starch into sugars. Amylase is present in human saliva, where it begins the chemical process of digestion. By in situ hybridization combined with high resolution cytogenetics, the amylase gene is mapped to 1p21. Amylase enzymes find use in bread making and to break down complex sugars such as starch(found in flour) into simple sugars. Yeast then feeds on these simple sugars and converts it into the waste products of alcohol and CO<sub>2</sub>.

## Selected Validation Data

Product datasheet

## Anti-AMY1A Antibody (Clone#23A54)

Catalog Number: **M12967**

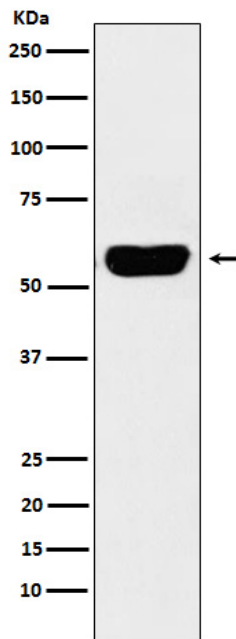
**BOSTER**<sup>®</sup>

antibody and ELISA experts

**BOSTER BIOLOGICAL TECHNOLOGY**

Building C21, 3rd to 5th Floors, Optics Valley Biopharmaceutical Accelerator,  
East Lake High-Tech Development Zone, Wuhan.

**Web:** [www.boster.com](http://www.boster.com) **Phone:** 027-67845390/1/2 **Email:** [boster@boster.com](mailto:boster@boster.com)



Western blot analysis of Salivary alpha amylase expression in Human pancreas lysate.