

Basic Information

Product Name	Anti-ATPB/ATP5F1B Antibody (Clone#OTI1F7)	
Gene Name	ATP5F1B	
Source	Mouse	
Clonality	Monoclonal	
Isotype	IgG1	
Species Reactivity	human, dog, monkey	
Tested Application	WB, IHC, ICC/IF, FCM	
Contents	PBS (pH 7.3) containing 1% BSA, 50% glycerol and 0.02% sodium azide.	
Immunogen	Full length human recombinant protein of human ATP5B (NP_001677) produced in HEK293T cell.	
Concentration	500 ug/ml	
Purification	Purified from mouse ascites fluids or tissue culture supernatant by affinity chromatography (protein A/G)	
Observed MW	56.6 kDa	
Dilution Ratios	Western blot (WB): 1:2000 Immunohistochemistry (IHC): 1:50 Immunocytochemistry/Immunofluorescence (ICC/IF): 1:100 Flow cytometry (FCM): 1:100	

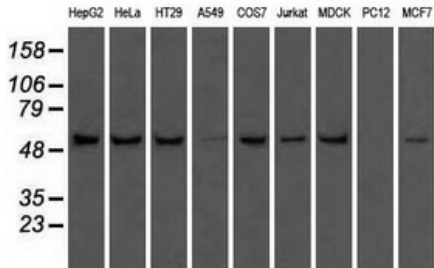
Storage

Stable for 12 months from date of receipt. Store at -20°C as received.

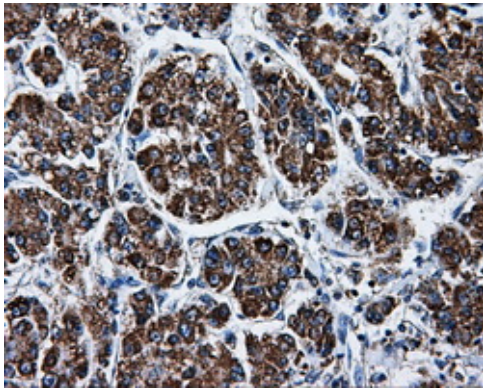
Background Information

This gene encodes a subunit of mitochondrial ATP synthase. Mitochondrial ATP synthase catalyzes ATP synthesis, utilizing an electrochemical gradient of protons across the inner membrane during oxidative phosphorylation. ATP synthase is composed of two linked multi-subunit complexes: the soluble catalytic core, F₁, and the membrane-spanning component, F_o, comprising the proton channel. The catalytic portion of mitochondrial ATP synthase consists of 5 different subunits (alpha, beta, gamma, delta, and epsilon) assembled with a stoichiometry of 3 alpha, 3 beta, and a single representative of the other 3. The proton channel consists of three main subunits (a, b, c). This gene encodes the beta subunit of the catalytic core.

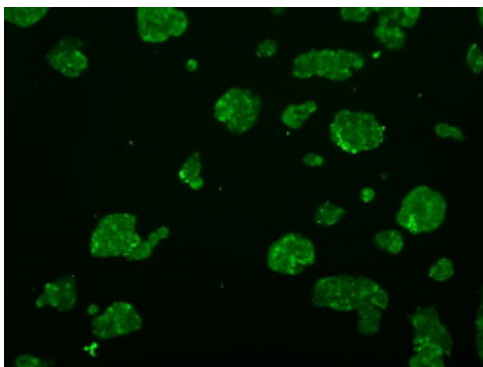
Selected Validation Data



Western blot analysis of extracts (35ug) from 9 different cell lines by using anti-ATP5B monoclonal antibody.



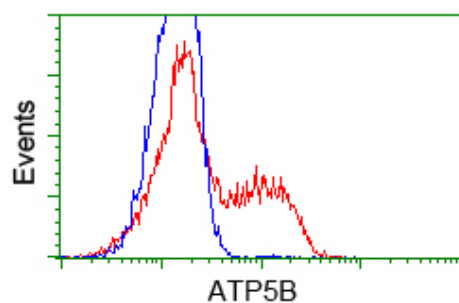
Immunohistochemical staining of paraffin-embedded Carcinoma of liver tissue using anti-ATP5B mouse monoclonal antibody. (Heat-induced epitope retrieval by 10mM citric buffer, pH6.0, 100°C for 10min, M32270, Dilution 1:50)



Immunofluorescent staining of HepG2 cells using anti-ATP5B mouse monoclonal antibody.

**Anti-ATPB/ATP5F1B Antibody
(Clone#OTI1F7)**

Catalog Number: M32270



HEK293T cells transfected with either pCMV6-ENTRY ATP5B (Red) or empty vector control plasmid (Blue) were immunostained with anti-ATP5B mouse monoclonal (M32270), and then analyzed by flow cytometry.