

Basic Information

Product Name	Anti-ALOX15 Antibody (Clone#OTI2G3)
Gene Name	ALOX15
Source	Mouse
Clonality	Monoclonal
Isotype	IgG2b
Species Reactivity	human
Tested Application	WB, IHC, FCM
Contents	PBS (PH 7.3) containing 1% BSA, 50% glycerol and 0.02% sodium azide.
Immunogen	Full length human recombinant protein of human ALOX15(NP_001131) produced in HEK293T cell.
Concentration	500 ug/ml
Purification	Purified from mouse ascites fluids or tissue culture supernatant by affinity chromatography (protein A/G)
Observed MW	75 kDa
Dilution Ratios	Western blot (WB): 1:2000 Immunohistochemistry (IHC):1:150 Flow cytometry (FCM): 1:100

Storage

Stable for 12 months from date of receipt. Store at -20°C as received.

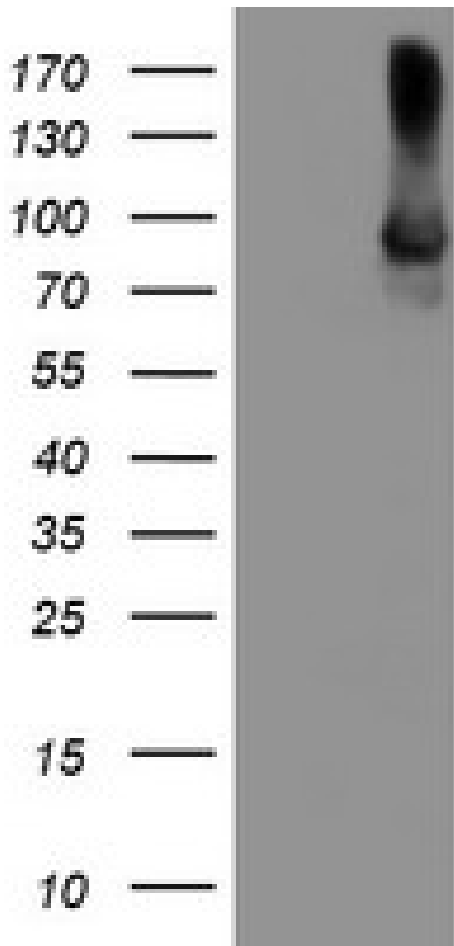
Background Information

Arachidonate 15-lipoxygenase, also known as 15 LOX or LOG15, is an enzyme that in humans is encoded by the ALOX15 gene. This gene is mapped to 17p13.2. It is found that ALOX15 is a mutator gene. ALOX15 gene product is implicated in antiinflammation, membrane remodeling, and cancer development/metastasis. Loss of the TP53 gene, or gain-of-function activities resulting from the expression of its mutant forms regulates ALOX15 promoter activity in human and in mouse, albeit in directionally opposite manners.

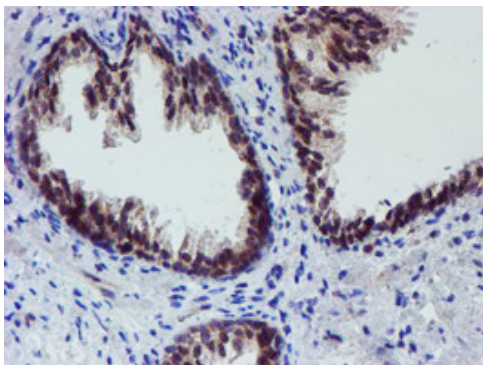
Reference

Anti-ALOX15 Antibody (Clone#OTI2G3)被引用在1文献中。

Selected Validation Data

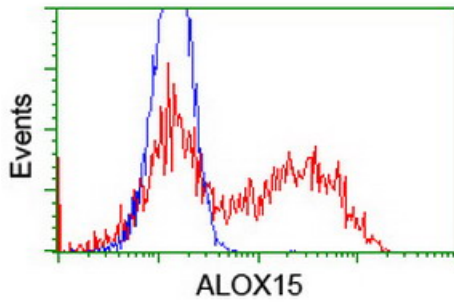


HEK293T cells were transfected with the pCMV6-ENTRY control (Left lane) or pCMV6-ENTRY ALOX15 (Right lane) cDNA for 48 hrs and lysed. Equivalent amounts of cell lysates (5 ug per lane) were separated by SDS-PAGE and immunoblotted with anti-ALOX15.



Immunohistochemical staining of paraffin-embedded Human prostate tissue within the normal limits using anti-ALOX15 mouse monoclonal antibody. (Heat-induced epitope retrieval by 10mM citric buffer, pH6.0, 100°C for 10min, M01222)

Product datasheet
Anti-ALOX15 Antibody
(Clone#OTI2G3)
Catalog Number: MA01222



HEK293T cells transfected with either overexpress plasmid (Red) or empty vector control plasmid (Blue) were immunostained by anti-ALOX15 antibody, and then analyzed by flow cytometry.