

Basic Information

Product Name	Anti-Bcl-XS/BCL2L1 Antibody	
Gene Name	BCL2L1	
Source	Rabbit	
Clonality	Polyclonal	
Isotype	IgG	
Species Reactivity	human, mouse, rat	
Tested Application	WB, IHC	
Contents	500 ug/ml antibody with PBS, 0.02% NaN ₃ , 1 mg/ml BSA and 50% glycerol.	
Immunogen	A synthetic peptide corresponding to a sequence in the middle region of human Bcl-XS, different from the related rat and mouse sequences by one amino acid.	
Concentration	500 ug/ml	
Observed MW	26 kDa、19 kDa	
Dilution Ratios	Western blot (WB): 1:500-2000 Immunohistochemistry (IHC): 1:20-100 (Boiling the paraffin sections in 10mM citrate buffer,pH6.0,or PH8.0 EDTA repair liquid for 20 mins is required for the staining of formalin/paraffin sections.) Optimal working dilutions must be determined by end user.	

Storage

12 months from date of receipt, -20°C as supplied. 6 months 2 to 8°C after reconstitution. Avoid repeated freezing and thawing.

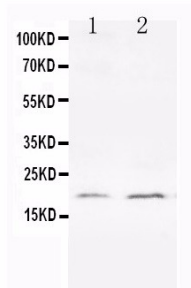
Background Information

Bcl-2-like protein 1 is a protein that in humans is encoded by the BCL2L1 gene. The protein encoded by this gene belongs to the BCL-2 protein family. BCL-2 family members form hetero- or homodimers and act as anti- or pro-apoptotic regulators that are involved in a wide variety of cellular activities. The proteins encoded by this gene are located at the outer mitochondrial membrane, and have been shown to regulate outer mitochondrial membrane channel (VDAC) opening. VDAC regulates mitochondrial membrane potential, and thus controls the production of reactive oxygen species and release of cytochrome C by mitochondria, both of which are the potent inducers of cell apoptosis. Alternative splicing results in multiple transcript variants encoding two different isoforms. The longer isoform (Bcl-xL) acts as an apoptotic inhibitor and the shorter form (Bcl-xS) acts as an apoptotic activator.

Reference

Anti-Bcl-XS/BCL2L1 Antibody被引用在7文献中。

Selected Validation Data



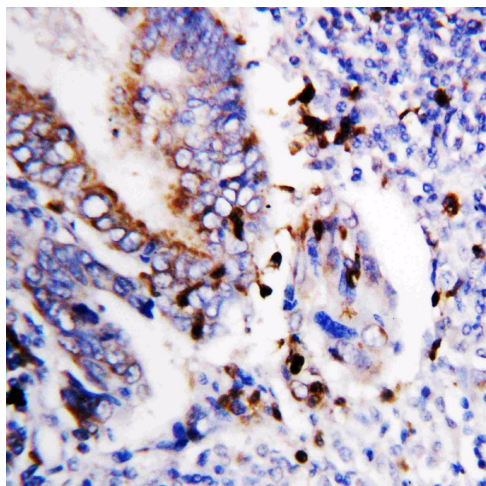
Western blot analysis of Bcl-XS/BCL2L1 using anti-Bcl-XS/BCL2L1 antibody (PA1232). The sample well of each lane was loaded with 30 ug of sample under reducing conditions.

Lane 1: HELA whole cell lysates at 40ug,

Lane 2: PC-12 whole cell lysates at 40ug.

After electrophoresis, proteins were transferred to a membrane.

Then the membrane was incubated with rabbit anti-Bcl-XS/BCL2L1 antigen affinity purified polyclonal antibody (PA1232) at a dilution of 1:1000 and probed with a goat anti-rabbit IgG-HRP secondary antibody (Catalog # BA1054). The signal is developed using ECL Plus Western Blotting Substrate (Catalog # AR1197). A specific band was detected for Bcl-XS/BCL2L1 at approximately 26 kDa、19 kDa. The expected band size for Bcl-XS/BCL2L1 is at 26 kDa.



IHC analysis of Bcl-XS/BCL2L1 using anti-Bcl-XS/BCL2L1 antibody (PA1232).

Bcl-XS/BCL2L1 was detected in a paraffin-embedded section of human colon cancer tissue. The tissue section was incubated with rabbit anti-Bcl-XS/BCL2L1 Antibody (PA1232) at a dilution of 1:200 and developed using HRP Conjugated Rabbit IgG Super Vision Assay Kit (Catalog # SV0002) with DAB (Catalog # AR1027) as the chromogen.