

Basic Information

| | |
|--------------------|---|
| Product Name | Anti-Fractalkine/CX3CL1 Antibody |
| Gene Name | CX3CL1 |
| Source | Rabbit |
| Clonality | Polyclonal |
| Isotype | IgG |
| Species Reactivity | human |
| Tested Application | WB |
| Contents | 500 ug/ml antibody with PBS, 0.02% NaN ₃ , 1 mg/ml BSA and 50% glycerol. |
| Immunogen | A synthetic peptide corresponding to a sequence at the N-terminus of human CX3CL1. |
| Concentration | 500 ug/ml |
| Purification | Immunogen affinity purified. |
| Observed MW | 90-100 kDa |
| Dilution Ratios | Western blot (WB):1:500-2000 |

Storage

12 months from date of receipt, -20°C as supplied.

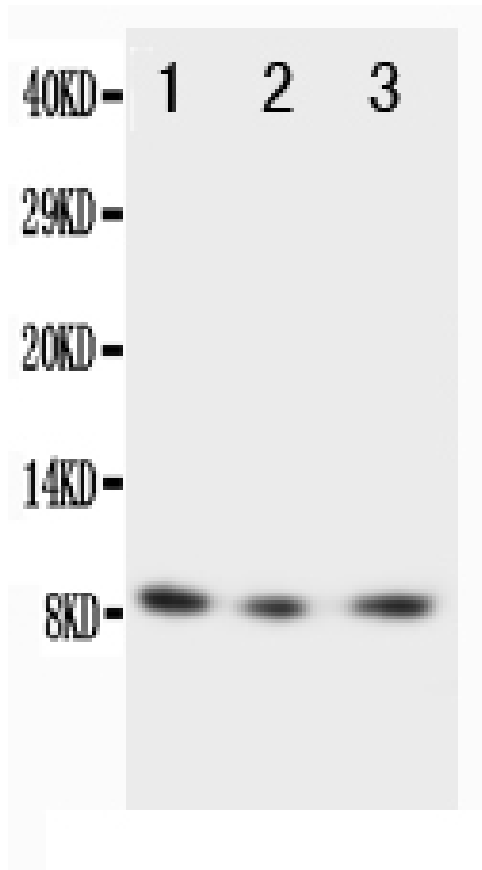
Background Information

Chemokine(C-X3-C motif) ligand 1, also known as CX3CL1, is a large cytokine protein. It is said to be the only known member of the CX3C chemokine family. It is also commonly known under the names fractalkine(in humans) and neurotactin(in mice). Its gene is mapped to the long arm of chromosome 8. Being the large protein, it has got 373 amino acids. Imai et al.(1997) identified a 7-transmembrane high-affinity receptor(CX3CR1; 601470) for fractalkine and showed that it mediates both the adhesive and migratory functions of fractalkine.

Reference

Anti-Fractalkine/CX3CL1 Antibody 被引用在1文献中。

Selected Validation Data



Western blot analysis of Fractalkine/CX3CL1 using anti-Fractalkine/CX3CL1 antibody (PA1400).

Lane 1: recombinant human Fractalkine protein 10ng,

Lane 2: recombinant human Fractalkine protein 5ng,

Lane 3: recombinant human Fractalkine protein 2.5ng.

After electrophoresis, proteins were transferred to a membrane. Then the membrane was incubated with rabbit anti-Fractalkine/CX3CL1 antigen affinity purified polyclonal antibody (PA1400) at a dilution of 1:1000 and probed with a goat anti-rabbit IgG-HRP secondary antibody (Catalog # BA1054). The signal is developed using ECL Plus Western Blotting Substrate (Catalog # AR1197). A specific band was detected for Fractalkine/CX3CL1 at approximately 90-100 kDa.