

Basic Information

Product Name	Anti-Complement C5 Antibody
Gene Name	C5
Source	Rabbit
Clonality	Polyclonal
Isotype	IgG
Species Reactivity	rat
Tested Application	WB
Contents	500 ug/ml antibody with PBS, 0.02% NaN ₃ , 1 mg/ml BSA and 50% glycerol.
Immunogen	A synthetic peptide corresponding to a sequence at the C-terminus of rat C5a, different from the related mouse sequence by five amino acids.
Concentration	500 ug/ml
Purification	Immunogen affinity purified.
Observed MW	75 kDa/115 kDa
Dilution Ratios	Western blot (WB):1:500-2000

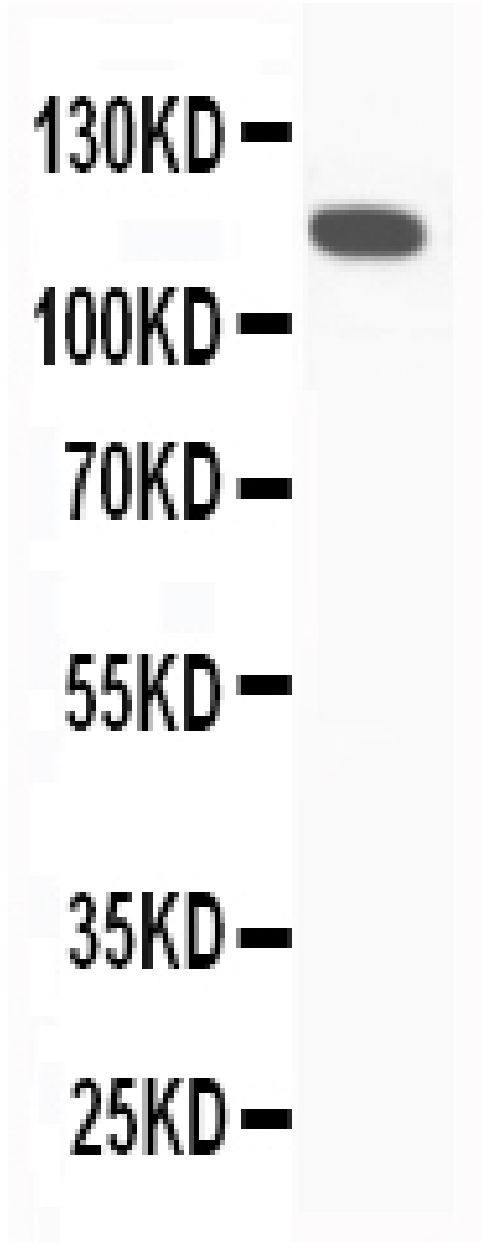
Storage

12 months from date of receipt, -20°C as supplied.

Background Information

C5a is a protein fragment released from complement component C5. This gene is mapped to 9q33.2. The protein encoded by this gene is the fifth component of complement, which plays an important role in inflammatory and cell killing processes. This protein is comprised of alpha and beta polypeptide chains that are linked by a disulfide bridge. An activation peptide, C5a, which is an anaphylatoxin that possesses potent spasmogenic and chemotactic activity, is derived from the alpha polypeptide via cleavage with a convertase. The C5b macromolecular cleavage product can form a complex with the C6 complement component, and this complex is the basis for formation of the membrane attack complex, which includes additional complement components. Mutations in this gene cause complement component 5 deficiency, a disease where patients show a propensity for severe recurrent infections. Defects in this gene have also been linked to susceptibility to liver fibrosis and to rheumatoid arthritis.

Selected Validation Data



Western blot analysis of Complement C5 using anti-Complement C5 antibody (PA2308-1). The sample well of each lane was loaded with 30 ug of sample under reducing conditions.

Lane 1: Rat liver tissue lysates.

After electrophoresis, proteins were transferred to a membrane. Then the membrane was incubated with rabbit anti-Complement C5 antigen affinity purified polyclonal antibody (PA2308-1) at a dilution of 1:1000 and probed with a goat anti-rabbit IgG-HRP secondary antibody (Catalog # BA1054). The signal is developed using ECL Plus Western Blotting Substrate (Catalog # AR1197). A specific band was detected for Complement C5 at approximately 75 kDa/115 kDa. The expected band size for Complement C5 is at 9 kDa.