

## Basic Information

<b>Product Name</b>	Anti-Complement C5 Antibody	
<b>Gene Name</b>	C5	
<b>Source</b>	Rabbit	
<b>Clonality</b>	Polyclonal	
<b>Isotype</b>	IgG	
<b>Species Reactivity</b>	mouse, rat	
<b>Tested Application</b>	IHC, WB	
<b>Contents</b>	500 ug/ml antibody with PBS, 0.02% NaN <sub>3</sub> , 1 mg/ml BSA and 50% glycerol.	
<b>Immunogen</b>	A synthetic peptide corresponding to a sequence at the N-terminus of rat C5a, different from the related mouse sequence by four amino acids.	
<b>Concentration</b>	500 ug/ml	
<b>Purification</b>	Immunogen affinity purified.	
<b>Observed MW</b>	75 kDa/115 kDa	
<b>Dilution Ratios</b>	Western blot (WB): Immunohistochemistry (IHC): (Boiling the paraffin sections in 10mM citrate buffer,pH6.0,or PH8.0 EDTA repair liquid for 20 mins is required for the staining of formalin/paraffin sections.) Optimal working dilutions must be determined by end user.	1:500-2000 1:50-400

## Storage

12 months from date of receipt, -20°C as supplied.

## Background Information

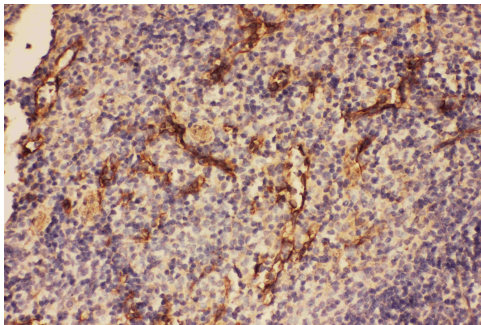
C5a is a protein fragment released from complement component C5. This gene is mapped to 9q33.2. The protein encoded by this gene is the fifth component of complement, which plays an important role in inflammatory and cell killing processes. This protein is comprised of alpha and beta polypeptide chains that are linked by a disulfide bridge. An activation peptide, C5a, which is an anaphylatoxin that possesses potent spasmogenic and chemotactic activity, is derived from the alpha polypeptide via cleavage with a convertase. The C5b macromolecular cleavage product can form a complex with the C6 complement component, and this complex is the basis for formation of the membrane attack complex, which includes additional complement components. Mutations in this gene cause complement component 5

deficiency, a disease where patients show a propensity for severe recurrent infections. Defects in this gene have also been linked to susceptibility to liver fibrosis and to rheumatoid arthritis.

## Reference

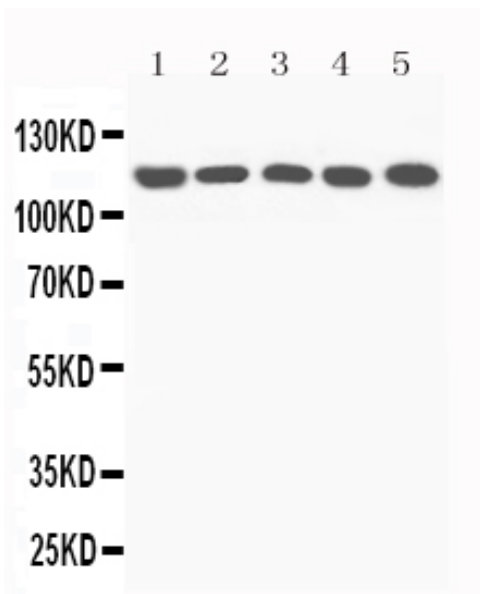
Anti-Complement C5 Antibody被引用在1文献中。

## Selected Validation Data



IHC analysis of Complement C5 using anti-Complement C5 antibody (PA2308).

Complement C5 was detected in a paraffin-embedded section of mouse spleen tissue. The tissue section was incubated with rabbit anti-Complement C5 Antibody (PA2308) at a dilution of 1:200 and developed using HRP Conjugated Rabbit IgG Super Vision Assay Kit (Catalog # SV0002) with DAB (Catalog # AR1027) as the chromogen.



Western blot analysis of Complement C5 using anti-Complement C5 antibody (PA2308). The sample well of each lane was loaded with 30 ug of sample under reducing conditions.

Lane 1: Rat Liver tissue lysates at 40ug,

Lane 2: Mouse Liver tissue lysates at 40ug,

Lane 3: NIH whole cell lysates at 40ug,

Lane 4: HEPA whole cell lysates at 40ug,

Lane 5: PC12 whole cell lysates at 40ug.

After electrophoresis, proteins were transferred to a membrane.

Then the membrane was incubated with rabbit anti-Complement C5 antigen affinity purified polyclonal antibody (PA2308) at a dilution of 1:1000 and probed with a goat anti-rabbit IgG-HRP secondary antibody (Catalog # BA1054). The signal is developed using ECL Plus Western Blotting Substrate (Catalog # AR1197). A specific band was detected for Complement C5 at approximately 75 kDa/115 kDa. The expected band size for Complement C5 is at 9 kDa.

Product datasheet

## Anti-Complement C5 Antibody

Catalog Number: **PA2308**

**BOSTER**<sup>®</sup>

antibody and ELISA experts

**BOSTER BIOLOGICAL TECHNOLOGY**

Building C21, 3rd to 5th Floors, Optics Valley Biopharmaceutical Accelerator,  
East Lake High-Tech Development Zone, Wuhan.

**Web:** [www.boster.com](http://www.boster.com) **Phone:** 027-67845390/1/2 **Email:** [boster@boster.com](mailto:boster@boster.com)