

## Basic Information

<b>Product Name</b>	Anti-Complement C5 Antibody	
<b>Gene Name</b>	C5	
<b>Source</b>	Rabbit	
<b>Clonality</b>	Polyclonal	
<b>Isotype</b>	IgG	
<b>Species Reactivity</b>	rat	
<b>Tested Application</b>	WB, IHC	
<b>Contents</b>	500 ug/ml antibody with PBS, 0.02% NaN <sub>3</sub> , 1 mg/ml BSA and 50% glycerol.	
<b>Immunogen</b>	E.coli-derived rat C5a recombinant protein (Position: D1-R77). Rat C5a shares 62% and 82% amino acid (aa) sequences identity with human and mouse C5a, respectively.	
<b>Concentration</b>	500 ug/ml	
<b>Purification</b>	Immunogen affinity purified.	
<b>Observed MW</b>	75 kDa/115 kDa	
<b>Dilution Ratios</b>	Western blot (WB): Immunohistochemistry (IHC): (Boiling the paraffin sections in 10mM citrate buffer,pH6.0,or PH8.0 EDTA repair liquid for 20 mins is required for the staining of formalin/paraffin sections.) Optimal working dilutions must be determined by end user.	1:500-2000 1:50-400

## Storage

12 months from date of receipt, -20°C as supplied.

## Background Information

C5a is a protein fragment released from complement component C5. This gene is mapped to 9q33.2. The protein encoded by this gene is the fifth component of complement, which plays an important role in inflammatory and cell killing processes. This protein is comprised of alpha and beta polypeptide chains that are linked by a disulfide bridge. An activation peptide, C5a, which is an anaphylatoxin that possesses potent spasmogenic and chemotactic activity, is derived from the alpha polypeptide via cleavage with a convertase. C5a plays a key role in increasing migration and adherence of neutrophils and monocytes to vessel walls. Mutations in this gene cause complement component 5 deficiency, a disease where patients show a propensity for severe recurrent infections. Defects in this gene have also

been linked to susceptibility to liver fibrosis and to rheumatoid arthritis.

## Reference

Anti-Complement C5 Antibody被引用在1文献中。

## Selected Validation Data

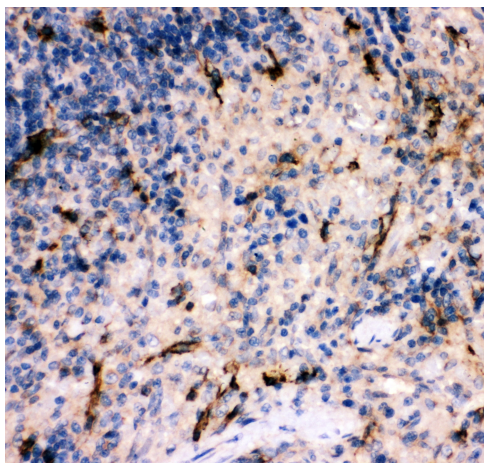


Western blot analysis of Complement C5 using anti-Complement C5 antibody (PB0184).

Lane 1: recombinant rat C5A protein 0.5ng.

After electrophoresis, proteins were transferred to a membrane.

Then the membrane was incubated with rabbit anti-Complement C5 antigen affinity purified polyclonal antibody (PB0184) at a dilution of 1:1000 and probed with a goat anti-rabbit IgG-HRP secondary antibody (Catalog # BA1054). The signal is developed using ECL Plus Western Blotting Substrate (Catalog # AR1197). A specific band was detected for Complement C5 at approximately 37 kDa.



IHC analysis of Complement C5 using anti-Complement C5 antibody (PB0184).

Complement C5 was detected in a paraffin-embedded section of rat spleen tissue. Biotinylated goat anti-rabbit IgG was used as secondary antibody. The tissue section was incubated with rabbit anti-Complement C5 Antibody (PB0184) at a dilution of 1:200 and developed using Streptavidin-Biotin-Complex (SABC) (Catalog # SA1022) with DAB (Catalog # AR1027) as the chromogen.