

Basic Information

Product Name	Anti-ZEB2 Antibody
Gene Name	ZEB2
Source	Rabbit
Clonality	Polyclonal
Isotype	IgG
Species Reactivity	human
Tested Application	WB, IHC, FCM
Contents	500 ug/ml antibody with PBS, 0.02% NaN3, 1 mg/ml BSA and 50% glycerol.
Immunogen	E.coli-derived human ZEB2 recombinant protein (Position: M1-P200). Human ZEB2 shares 92% amino acid (aa) sequence identity with mouse ZEB2.
Concentration	500 ug/ml
Purification	Immunogen affinity purified.
Observed MW	180-200 kDa
Dilution Ratios	Western blot (WB): 1:500-2000 Immunohistochemistry (IHC): 1:50-400 Flow Cytometry (Fixed): 1:50-200 (Boiling the paraffin sections in 10mM citrate buffer,pH6.0,or PH8.0 EDTA repair liquid for 20 mins is required for the staining of formalin/paraffin sections.) Optimal working dilutions must be determined by end user.

Storage

12 months from date of receipt, -20°C as supplied.

Background Information

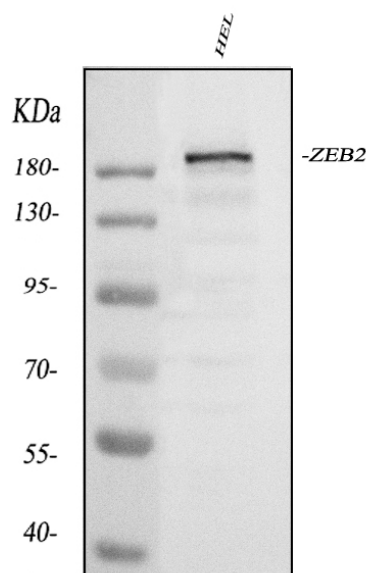
ZEB2(Zinc finger E-box-binding homeobox2), also known as SIP1 or ZINC FINGER HOMEBOX 1B(ZFH1B), is a protein that in humans is encoded by the ZEB2 gene. The ZEB2 gene is a member of the ZEB1/Drosophila Zfh1 family of 2-handed zinc finger/homeodomain proteins and functions as a DNA-binding transcriptional repressor that interacts with activated SMADs, the transducers of TGF-beta signaling, and interacts with the nucleosome remodeling and histone deacetylation(NURD) complex. By radiation hybrid analysis, this gene is mapped to 2q22. It has been found that synthesis of ZEB2 was upregulated following SNAI1 expression in human cell lines, and the expression of SNAI1 in

epithelial cells can trigger an epithelial-mesenchyme transition.

Reference

Anti-ZEB2 Antibody被引用在2文献中。

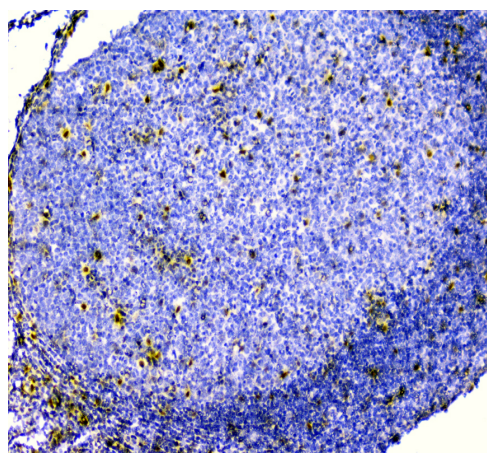
Selected Validation Data



Western blot analysis of ZEB2 using anti-ZEB2 antibody (PB0233). The sample well of each lane was loaded with 30 ug of sample under reducing conditions.

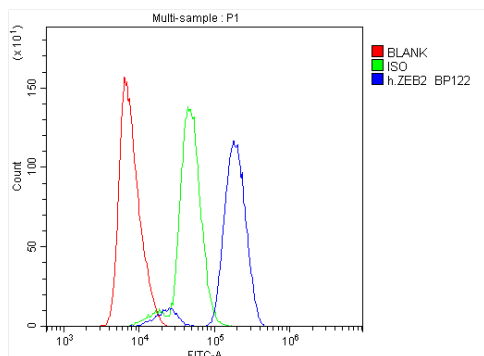
Lane 1: human Hela whole cell lysates.

After electrophoresis, proteins were transferred to a membrane. Then the membrane was incubated with rabbit anti-ZEB2 antigen affinity purified polyclonal antibody (PB0233) at a dilution of 1:1000 and probed with a goat anti-rabbit IgG-HRP secondary antibody (Catalog # BA1054). The signal is developed using ECL Plus Western Blotting Substrate (Catalog # AR1197). A specific band was detected for ZEB2 at approximately 180-200 kDa. The expected band size for ZEB2 is at 136 kDa.



IHC analysis of ZEB2 using anti-ZEB2 antibody (PB0233) .

ZEB2 was detected in a paraffin-embedded section of human tonsil tissue. The tissue section was incubated with rabbit anti-ZEB2 Antibody (PB0233) at a dilution of 1:200 and developed using HRP Conjugated Rabbit IgG Super Vision Assay Kit (Catalog # SV0002) with DAB (Catalog # AR1027) as the chromogen.



Flow Cytometry analysis of U937 cells using anti-ZEB2 antibody (PB0233).

Overlay histogram showing U937 cells stained with PB0233 (Blue line). To facilitate intracellular staining, cells were fixed with 4% paraformaldehyde and permeabilized with permeabilization buffer. The cells were blocked with 10% normal goat serum. And then incubated with rabbit anti-ZEB2 Antibody (PB0233) at 1:100 dilution for 30 min at 20°C. Fluoro488 conjugated goat anti-rabbit IgG (BA1127) was used as secondary antibody at 1:100 dilution for 30 minutes at 20°C. Isotype control antibody (Green line) was rabbit IgG at 1:100 dilution used under the same conditions. Unlabelled sample without incubation with primary antibody and secondary antibody (Red line) was used as a blank control.