

Basic Information

Product Name	Anti-Serotonin transporter/SLC6A4 Antibody	
Gene Name	SLC6A4	
Source	Rabbit	
Clonality	Polyclonal	
Isotype	IgG	
Species Reactivity	human, mouse, rat	
Tested Application	WB, IHC, IF	
Contents	500 ug/ml antibody with PBS, 0.02% NaN ₃ , 1 mg/ml BSA and 50% glycerol.	
Immunogen	A synthetic peptide corresponding to a sequence at the N-terminus of human SLC6A4 different from the related mouse and rat sequences by six amino acids.	
Concentration	500 ug/ml	
Purification	Immunogen affinity purified.	
Observed MW	70-90 kDa	
Dilution Ratios	Western blot (WB): 1:500-2000 Immunohistochemistry (IHC): 1:50-400 Immunofluorescence (IF): 1:50-400 (Boiling the paraffin sections in 10mM citrate buffer,pH6.0,or PH8.0 EDTA repair liquid for 20 mins is required for the staining of formalin/paraffin sections.) Optimal working dilutions must be determined by end user.	

Storage

12 months from date of receipt, -20°C as supplied.

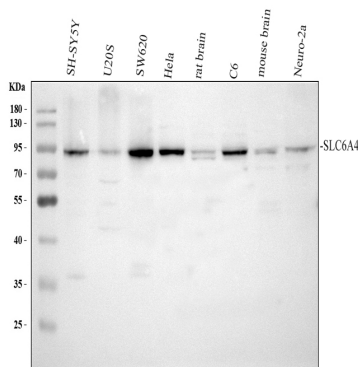
Background Information

SLC6A4 (Solute carrier family 6, member 4), also known as SERT (serotonin transporter), is a monoamine transporter protein. The SLC6A4 gene spans 31 kb and contains 14 exons. This protein integral membrane protein transports the neurotransmitter serotonin from synaptic spaces into presynaptic neurons. This transport of serotonin by the SERT protein terminates the action of serotonin and recycles it in a sodium-dependent manner. This protein is the target of many antidepressant medications, including those of the SSRI class. It is a member of the sodium: neurotransmitter symporter family. A repeat length polymorphism in the promoter of this gene has been shown to affect the rate of serotonin uptake and may play a role in sudden infant death syndrome, aggressive behavior in Alzheimer disease patients, post-traumatic stress disorder and depression-susceptibility in people experiencing emotional trauma.

Reference

Anti-Serotonin transporter/SLC6A4 Antibody被引用在4文献中。

Selected Validation Data



Western blot analysis of Serotonin transporter/SLC6A4 using anti-Serotonin transporter/SLC6A4 antibody (PB0442). The sample well of each lane was loaded with 30 ug of sample under reducing conditions.

Lane 1: human SH-SY5Y whole cell lysates,

Lane 2: human U2OS whole cell lysates,

Lane 3: human SW620 whole cell lysates,

Lane 4: human Hela whole cell lysates,

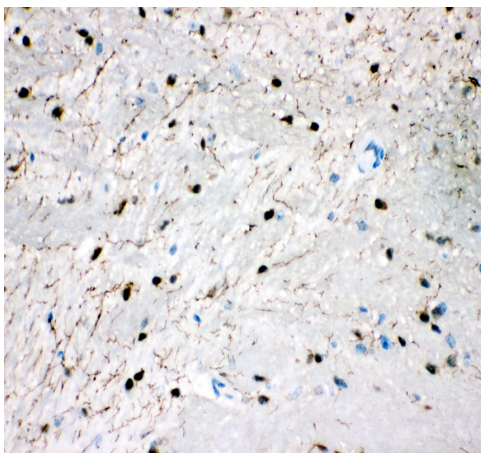
Lane 5: rat brain tissue lysates,

Lane 6: rat C6 whole cell lysates,

Lane 7: mouse brain tissue lysates,

Lane 8: mouse Neuro-2a whole cell lysates.

After electrophoresis, proteins were transferred to a membrane. Then the membrane was incubated with rabbit anti-Serotonin transporter/SLC6A4 antigen affinity purified polyclonal antibody (PB0442) at a dilution of 1:1000 and probed with a goat anti-rabbit IgG-HRP secondary antibody (Catalog # BA1054). The signal is developed using ECL Plus Western Blotting Substrate (Catalog # AR1197). A specific band was detected for Serotonin transporter/SLC6A4 at approximately 70-90 kDa. The expected band size for Serotonin transporter/SLC6A4 is at 70 kDa.

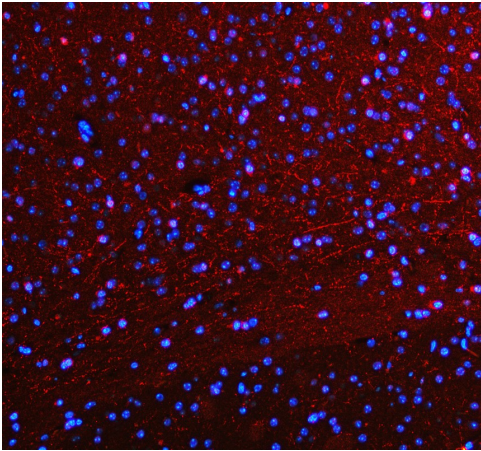


IHC analysis of Serotonin transporter/SLC6A4 using anti-Serotonin transporter/SLC6A4 antibody (PB0442).

Serotonin transporter/SLC6A4 was detected in a paraffin-embedded section of mouse brain tissue. The tissue section was incubated with rabbit anti-Serotonin transporter/SLC6A4 Antibody (PB0442) at a dilution of 1:200 and developed using HRP Conjugated Rabbit IgG Super Vision Assay Kit (Catalog # SV0002) with DAB (Catalog # AR1027) as the chromogen.

Anti-Serotonin transporter/SLC6A4 Antibody

Catalog Number: PB0442



IF analysis of Serotonin transporter/SLC6A4 using anti-Serotonin transporter/SLC6A4 antibody (PB0442).

Serotonin transporter/SLC6A4 was detected in a paraffin-embedded section of mouse brain tissue. The tissue section was incubated with rabbit anti-Serotonin transporter/SLC6A4 Antibody (PB0442) at a dilution of 1:100. Cy3-conjugated Anti-rabbit IgG Secondary Antibody (red)(Catalog#BA1032) was used as secondary antibody. The section was counterstained with DAPI (Catalog # AR1176) (Blue).