

## Basic Information

Product Name	Anti-CIB1 Antibody
Gene Name	CIB1
Source	Rabbit
Clonality	Polyclonal
Isotype	IgG
Species Reactivity	human, mouse, rat
Tested Application	WB
Contents	500 ug/ml antibody with PBS, 0.02% NaN <sub>3</sub> , 1 mg/ml BSA and 50% glycerol.
Immunogen	E.coli-derived human CIB1 recombinant protein (Position: S6-L191). Human CIB1 shares 93.5% amino acid (aa) sequence identity with both mouse and rat CIB1.
Concentration	500 ug/ml
Purification	Immunogen affinity purified.
Observed MW	27 kDa
Dilution Ratios	Western blot (WB):1:500-2000

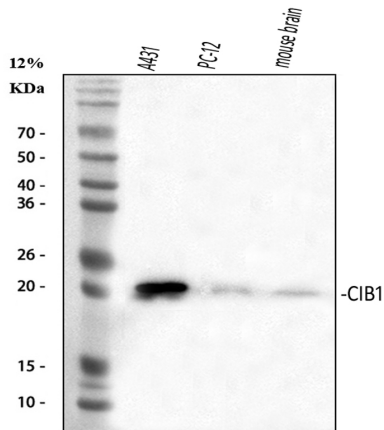
## Storage

12 months from date of receipt, -20°C as supplied.

## Background Information

Calcium and integrin-binding protein 1 is a protein that in humans is encoded by the CIB1 gene. This gene encodes a member of the EF-hand domain-containing calcium-binding superfamily. And this protein interacts with many other proteins, including the platelet integrin alpha-IIb-beta-3, DNA-dependent protein kinase, presenilin-2, focal adhesion kinase, p21 activated kinase, and protein kinase D. Moreover, the encoded protein may be involved in cell survival and proliferation, and is associated with several disease states including cancer and Alzheimer's disease. Alternative splicing results in multiple transcript variants.

## Selected Validation Data



Western blot analysis of CIB1 using anti-CIB1 antibody (PB0511). The sample well of each lane was loaded with 30 ug of sample under reducing conditions.

Lane 1: human A431 whole cell lysates,

Lane 2: rat PC-12 whole cell lysates,

Lane 3: mouse brain tissue lysates.

After electrophoresis, proteins were transferred to a membrane. Then the membrane was incubated with rabbit anti-CIB1 antigen affinity purified polyclonal antibody (PB0511) at a dilution of 1:1000 and probed with a goat anti-rabbit IgG-HRP secondary antibody (Catalog # BA1054). The signal is developed using ECL Plus Western Blotting Substrate (Catalog # AR1197). A specific band was detected for CIB1 at approximately 22 kDa. The expected band size for CIB1 is at 22 kDa.