

Basic Information

Product Name	Anti-CTGF/CCN2 Antibody	
Gene Name	CCN2	
Source	Rabbit	
Clonality	Polyclonal	
Isotype	IgG	
Species Reactivity	human, mouse, rat	
Tested Application	WB, IHC	
Contents	500 ug/ml antibody with PBS, 0.02% NaN ₃ , 1 mg/ml BSA and 50% glycerol.	
Immunogen	E.coli-derived human CTGF recombinant protein (Position: R58-A349). Human CTGF shares 95.5% and 95.9% amino acid (aa) sequence identity with mouse and rat CTGF, respectively.	
Concentration	500 ug/ml	
Purification	Immunogen affinity purified.	
Observed MW	38 kDa	
Dilution Ratios	Western blot (WB): 1:500-2000 Immunohistochemistry (IHC): 1:50-400 (Boiling the paraffin sections in 10mM citrate buffer, pH6.0, or PH8.0 EDTA repair liquid for 20 mins is required for the staining of formalin/paraffin sections.) Optimal working dilutions must be determined by end user.	

Storage

12 months from date of receipt, -20°C as supplied.

Background Information

CTGF, also known as CCN2 or connective tissue growth factor, is a matricellular protein of the CCN family of extracellular matrix-associated heparin-binding proteins (see also CCN intercellular signaling protein). CTGF has important roles in many biological processes, including cell adhesion, migration, proliferation, angiogenesis, skeletal development, and tissue wound repair, and is critically involved in fibrotic disease and several forms of cancers. The protein encoded by this gene is a mitogen that is secreted by vascular endothelial cells. And the encoded protein plays a role in chondrocyte proliferation and differentiation, cell adhesion in many cell types, and is related to platelet-derived growth factor. Certain polymorphisms in this gene have been linked with a higher incidence of systemic sclerosis.

Reference

Anti-CTGF/CCN2 Antibody 被引用在19文献中。

Selected Validation Data



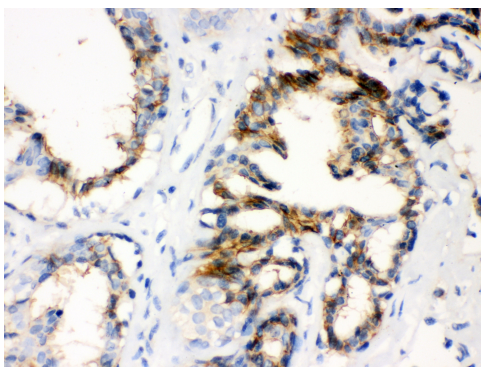
Western blot analysis of CTGF/CCN2 using anti-CTGF/CCN2 antibody (PB0570). The sample well of each lane was loaded with 30 ug of sample under reducing conditions.

Lane 1: Rat Liver tissue lysates,

Lane 2: Rat Thymus tissue lysates,

Lane 3: HELA whole cell lysates.

After electrophoresis, proteins were transferred to a membrane. Then the membrane was incubated with rabbit anti-CTGF/CCN2 antigen affinity purified polyclonal antibody (PB0570) at a dilution of 1:1000 and probed with a goat anti-rabbit IgG-HRP secondary antibody (Catalog # BA1054). The signal is developed using ECL Plus Western Blotting Substrate (Catalog # AR1197). A specific band was detected for CTGF/CCN2 at approximately 38 kDa. The expected band size for CTGF/CCN2 is at 38 kDa.



IHC analysis of CTGF/CCN2 using anti-CTGF/CCN2 antibody (PB0570). CTGF/CCN2 was detected in a paraffin-embedded section of human mammary cancer tissue. Biotinylated goat anti-rabbit IgG was used as secondary antibody. The tissue section was incubated with rabbit anti-CTGF/CCN2 Antibody (PB0570) at a dilution of 1:200 and developed using Streptavidin-Biotin-Complex (SABC) (Catalog # SA1022) with DAB (Catalog # AR1027) as the chromogen.