

## Basic Information

Product Name	Anti-Clusterin/CLU Antibody	
Gene Name	CLU	
Source	Rabbit	
Clonality	Polyclonal	
Isotype	IgG	
Species Reactivity	human	
Tested Application	WB, IHC, ELISA	
Contents	500 ug/ml antibody with PBS, 0.02% NaN <sub>3</sub> , 1 mg/ml BSA and 50% glycerol.	
Immunogen	E. coli-derived human Apolipoprotein J recombinant protein (Position: S228-E449). Human Apolipoprotein J shares 76.1 % and 75.2 % amino acid (aa) sequence identity with mouse and rat Apolipoprotein J, respectively.	
Concentration	500 ug/ml	
Purification	Immunogen affinity purified.	
Observed MW	42-75 kDa	
Dilution Ratios	Western blot (WB): 1:500-2000 Immunohistochemistry (IHC): 1:50-400 Enzyme linked immunosorbent assay (ELISA): 1:100-1000 (Boiling the paraffin sections in 10mM citrate buffer, pH6.0, or PH8.0 EDTA repair liquid for 20 mins is required for the staining of formalin/paraffin sections.) Optimal working dilutions must be determined by end user.	

## Storage

12 months from date of receipt, -20°C as supplied.

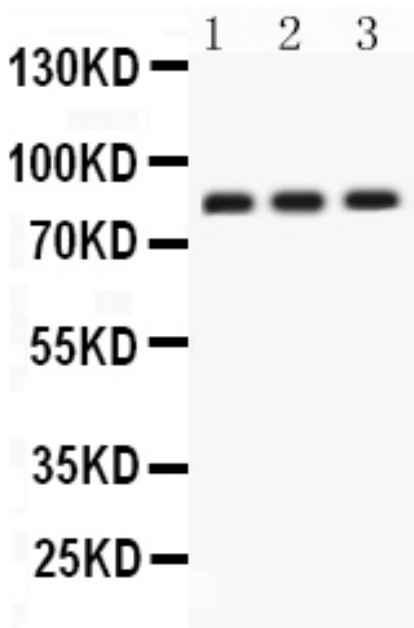
## Background Information

Clusterin (apolipoprotein J) is a 75 - 80 kDa disulfide-linked heterodimeric protein associated with the clearance of cellular debris and apoptosis. In humans, clusterin is encoded by the CLU gene. This protein has several synonyms: dimeric acidic glycoprotein (DAG protein), testosterone repressed prostate message-2 (TRPM-2), sulfated glycoprotein-2 (SGP-2) and complement lysis inhibitor (CLI). Clusterin was mapped to mouse chromosome 14. Clusterin is a ubiquitously expressed molecule thought to influence a variety of processes including cell death. In the brain, it accumulates in dying neurons following seizures and hypoxic-ischemic (H-I) injury. clusterin may be a new therapeutic target to modulate non-caspase-dependent neuronal death following acute brain injury.

## Reference

Anti-Clusterin/CLU Antibody 被引用在1文献中。

## Selected Validation Data



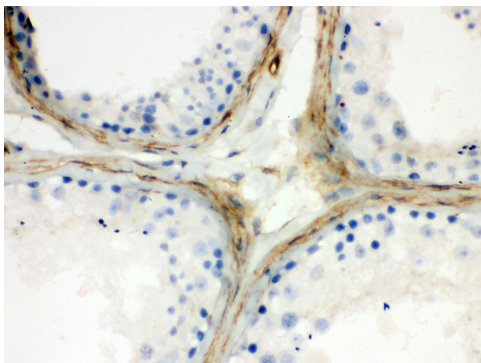
Western blot analysis of Clusterin/CLU using anti-Clusterin/CLU antibody (PB0601). The sample well of each lane was loaded with 30 ug of sample under reducing conditions.

Lane 1: SKOV whole cell lysates,

Lane 2: U87 whole cell lysates,

Lane 3: PANC whole cell lysates.

After electrophoresis, proteins were transferred to a membrane. Then the membrane was incubated with rabbit anti-Clusterin/CLU antigen affinity purified polyclonal antibody (PB0601) at a dilution of 1:1000 and probed with a goat anti-rabbit IgG-HRP secondary antibody (Catalog # BA1054). The signal is developed using ECL Plus Western Blotting Substrate (Catalog # AR1197). A specific band was detected for Clusterin/CLU at approximately 42-75 kDa. The expected band size for Clusterin/CLU is at 52 kDa.



IHC analysis of Clusterin/CLU using anti-Clusterin/CLU antibody (PB0601). Clusterin/CLU was detected in a paraffin-embedded section of Human Testis tissue. Biotinylated goat anti-rabbit IgG was used as secondary antibody. The tissue section was incubated with rabbit anti-Clusterin/CLU Antibody (PB0601) at a dilution of 1:200 and developed using Streptavidin-Biotin-Complex (SABC) (Catalog # SA1022) with DAB (Catalog # AR1027) as the chromogen.

Product datasheet

## Anti-Clusterin/CLU Antibody

Catalog Number: **PB0601**



antibody and ELISA experts

**BOSTER BIOLOGICAL TECHNOLOGY**

Building C21, 3rd to 5th Floors, Optics Valley Biopharmaceutical Accelerator,  
East Lake High-Tech Development Zone, Wuhan.

**Web:** [www.boster.com](http://www.boster.com) **Phone:** 027-67845390/1/2 **Email:** [boster@boster.com](mailto:boster@boster.com)