

## Basic Information

Product Name	Anti-Glucagon/GCG Antibody	
Gene Name	GCG	
Source	Rabbit	
Clonality	Polyclonal	
Isotype	IgG	
Species Reactivity	human, mouse, rat	
Tested Application	IHC, IF	
Contents	500 ug/ml antibody with PBS, 0.02% NaN <sub>3</sub> , 1 mg/ml BSA and 50% glycerol.	
Immunogen	A synthetic peptide corresponding to a sequence at the N-terminus of human GLP1 identical to the related mouse and rat sequences.	
Concentration	500 ug/ml	
Purification	Immunogen affinity purified.	
Dilution Ratios	Immunohistochemistry (IHC): 1:50-400 Immunofluorescence (IF): 1:50-400 (Boiling the paraffin sections in 10mM citrate buffer, pH6.0, or PH8.0 EDTA repair liquid for 20 mins is required for the staining of formalin/paraffin sections.) Optimal working dilutions must be determined by end user.	

## Storage

12 months from date of receipt, -20°C as supplied.

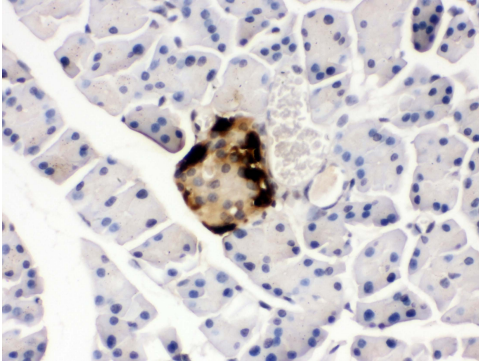
## Background Information

GCG is also known as GLP1, or Glucagon. Glucagon is a 29-amino acid pancreatic hormone that counteracts the glucose-lowering action of insulin by stimulating glycogenolysis and gluconeogenesis. It is mapped to 2q36-2q37. GLP1, also known as 7-37 for the codons of the preproglucagon molecule which encode it, renders pancreatic beta-cells 'glucose-competent' and may be useful in the treatment of noninsulin-dependent diabetes mellitus. Also, GLP1 is a potent insulin secretagogue. It plays a major role in the enteroinsular axis, accounting, for example, for the finding that plasma insulin levels accompanying oral intake of glucose are greater than those observed when glucose is given intravenously.

## Reference

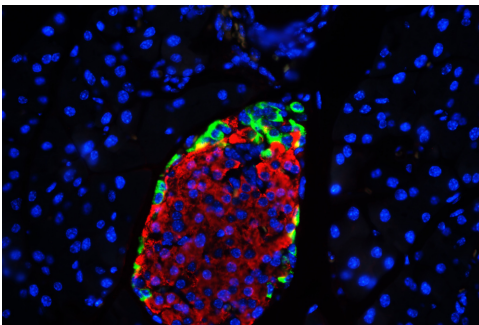
Anti-Glucagon/GCG Antibody被引用在7文献中。

## Selected Validation Data



IHC analysis of Glucagon/GCG using anti-Glucagon/GCG antibody (PB0742).

Glucagon/GCG was detected in a paraffin-embedded section of mouse pancreas tissue. Biotinylated goat anti-rabbit IgG was used as secondary antibody. The tissue section was incubated with rabbit anti-Glucagon/GCG Antibody (PB0742) at a dilution of 1:200 and developed using Streptavidin-Biotin-Complex (SABC) (Catalog # SA1022) with DAB (Catalog # AR1027) as the chromogen.



IF analysis of Glucagon/GCG using anti-Glucagon/GCG antibody (PB0742) and anti-Insulin/INS antibody (BM0080).

Glucagon/GCG was detected in a paraffin-embedded section of mouse pancreas tissue. The tissue section was incubated with rabbit anti-Glucagon/GCG Antibody (PB0742) at a dilution of 1:100. Dylight488-conjugated Anti-rabbit IgG Secondary Antibody (green)(Catalog#BA1127) and Cy3-conjugated Anti-mouse IgG Secondary Antibody (red)(Catalog#BA1031) were used as secondary antibody. The section was counterstained with DAPI (Catalog # AR1176) (Blue).