

## Basic Information

Product Name	Anti-CIP2A Antibody
Gene Name	CIP2A
Source	Rabbit
Clonality	Polyclonal
Isotype	IgG
Species Reactivity	human, mouse, rat
Tested Application	WB
Contents	500 ug/ml antibody with PBS, 0.02% NaN <sub>3</sub> , 1 mg/ml BSA and 50% glycerol.
Immunogen	A synthetic peptide corresponding to a sequence at the C-terminus of human KIAA1524 different from the related mouse sequence by three amino acids.
Concentration	500 ug/ml
Purification	Immunogen affinity purified.
Observed MW	102 kDa
Dilution Ratios	Western blot (WB):1:500-2000

## Storage

12 months from date of receipt, -20°C as supplied.

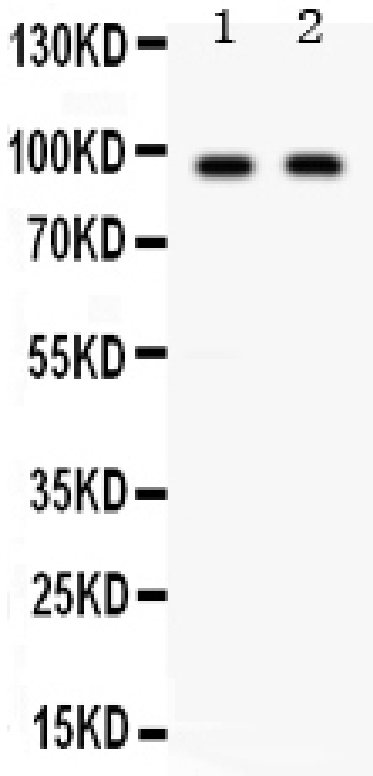
## Background Information

Protein CIP2A, also known as Cancerous inhibitor of PP2A (CIP2A), is a protein that in humans is encoded by the KIAA1524 gene. CIP2A is required for the malignant cellular growth and for in vivo tumor formation. In accordance with the oncogenic role of CIP2A, overexpression of CIP2A promotes Ras-elicited cell growth and transforms immortalized human cells (HEK-TERTs). More recently CIP2A has been shown to regulate phosphorylation and activity of many other oncoproteins and to drive malignant cell growth and tumorigenesis in various human cancer types. Importantly, CIP2A deficient mice are viable, suggesting that targeting of oncogenic function of CIP2A would not result in serious side-effects.

## Reference

Anti-CIP2A Antibody被引用在1文献中。

## Selected Validation Data



Western blot analysis of CIP2A using anti-CIP2A antibody (PB0754). The sample well of each lane was loaded with 30 ug of sample under reducing conditions.

Lane 1: Mouse Testis tissue lysates,

Lane 2: HELA whole cell lysates.

After electrophoresis, proteins were transferred to a membrane. Then the membrane was incubated with rabbit anti-CIP2A antigen affinity purified polyclonal antibody (PB0754) at a dilution of 1:1000 and probed with a goat anti-rabbit IgG-HRP secondary antibody (Catalog # BA1054). The signal is developed using ECL Plus Western Blotting Substrate (Catalog # AR1197). A specific band was detected for CIP2A at approximately 102 kDa. The expected band size for CIP2A is at 102 kDa.