

## Basic Information

<b>Product Name</b>	Anti-LOX Antibody
<b>Gene Name</b>	LOX
<b>Source</b>	Rabbit
<b>Clonality</b>	Polyclonal
<b>Isotype</b>	IgG
<b>Species Reactivity</b>	human, mouse, rat
<b>Tested Application</b>	WB, ELISA
<b>Contents</b>	500 ug/ml antibody with PBS, 0.02% NaN <sub>3</sub> , 1 mg/ml BSA and 50% glycerol.
<b>Immunogen</b>	A synthetic peptide corresponding to a sequence in the middle region of human LOX different from the related mouse and rat sequences by one amino acid.
<b>Concentration</b>	500 ug/ml
<b>Purification</b>	Immunogen affinity purified.
<b>Observed MW</b>	47 kDa
<b>Dilution Ratios</b>	Western blot (WB): 1:500-2000 Enzyme linked immunosorbent assay (ELISA):1:100-1000

## Storage

12 months from date of receipt, -20°C as supplied.

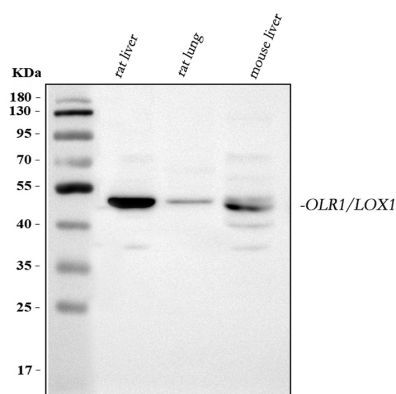
## Background Information

Lysyl oxidase (LOX), also known as protein-lysine 6-oxidase, is a protein that, in humans, is encoded by the LOX gene. The protein encoded by this gene is an extracellular copper enzyme that initiates the crosslinking of collagens and elastin. The enzyme catalyzes oxidative deamination of the epsilon-amino group in certain lysine and hydroxylysine residues of collagens and lysine residues of elastin. In addition to crosslinking extracellular matrix proteins, the encoded protein may have a role in tumor suppression. Defects in this gene are a cause of autosomal recessive cutis laxa type I (CL type I). Two transcript variants encoding different isoforms have been found for this gene.

## Reference

Anti-LOX Antibody被引用在1文献中。

## Selected Validation Data



Western blot analysis of LOX using anti-LOX antibody (PB0757). The sample well of each lane was loaded with 30 ug of sample under reducing conditions.

Lane 1: rat liver tissue lysates,

Lane 2: rat lung tissue lysates,

Lane 3: mouse liver tissue lysates.

After electrophoresis, proteins were transferred to a membrane.

Then the membrane was incubated with rabbit anti-LOX antigen

affinity purified polyclonal antibody (PB0757) at a dilution of 1:1000

and probed with a goat anti-rabbit IgG-HRP secondary antibody

(Catalog # BA1054). The signal is developed using ECL Plus Western

Blotting Substrate (Catalog # AR1197). A specific band was detected

for LOX at approximately 47 kDa. The expected band size for LOX is

at 47 kDa.