

## Basic Information

Product Name	Anti-EGF Antibody
Gene Name	EGF
Source	Rabbit
Clonality	Polyclonal
Isotype	IgG
Species Reactivity	human
Tested Application	WB, ELISA
Contents	500 ug/ml antibody with PBS, 0.02% NaN <sub>3</sub> , 1 mg/ml BSA and 50% glycerol.
Immunogen	E. coli-derived human EGF recombinant protein (Position: N971-R1023). Human EGF shares 69.8% amino acid (aa) sequence identity with both mouse and rat EGF.
Concentration	500 ug/ml
Purification	Immunogen affinity purified.
Observed MW	134 kDa
Dilution Ratios	Western blot (WB): 1:500-2000 Enzyme linked immunosorbent assay (ELISA):1:100-1000

## Storage

12 months from date of receipt, -20°C as supplied.

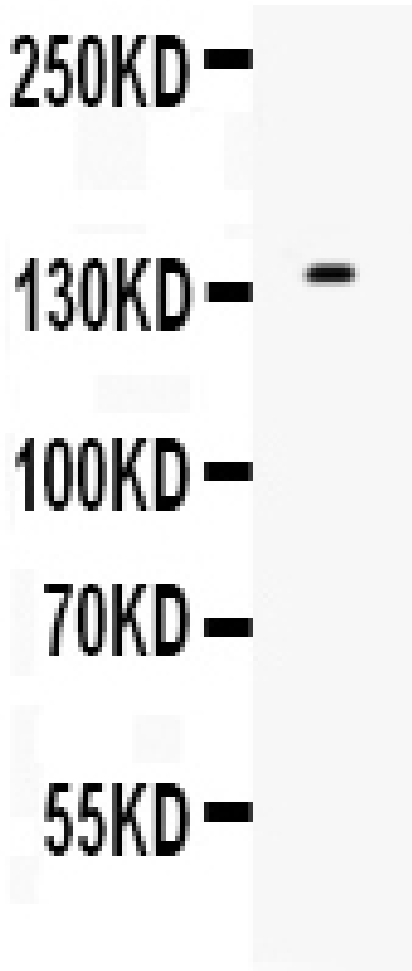
## Background Information

EGF is known as epidermal growth factor. This gene encodes a member of the epidermal growth factor superfamily. The encoded preproprotein is proteolytically processed to generate the 53-amino acid epidermal growth factor peptide. This protein acts a potent mitogenic factor that plays an important role in the growth, proliferation and differentiation of numerous cell types. Additionally, it acts by binding with high affinity to the cell surface receptor, epidermal growth factor receptor. Defects in this gene are the cause of hypomagnesemia type 4. Dysregulation of this gene has been associated with the growth and progression of certain cancers. Alternative splicing results in multiple transcript variants, at least one of which encodes a preproprotein that is proteolytically processed.

## Reference

Anti-EGF Antibody被引用在1文献中。

## Selected Validation Data



Western blot analysis of EGF using anti-EGF antibody (PB0903). The sample well of each lane was loaded with 30 ug of sample under reducing conditions.

Lane 1: human 22RV1 whole cell lysates.

After electrophoresis, proteins were transferred to a membrane. Then the membrane was incubated with rabbit anti-EGF antigen affinity purified polyclonal antibody (PB0903) at a dilution of 1:1000 and probed with a goat anti-rabbit IgG-HRP secondary antibody (Catalog # BA1054). The signal is developed using ECL Plus Western Blotting Substrate (Catalog # AR1197). A specific band was detected for EGF at approximately 134 kDa. The expected band size for EGF is at 134 kDa.