

Basic Information

Product Name	Anti-PSAT1 Antibody	
Gene Name	PSAT1	
Source	Rabbit	
Clonality	Polyclonal	
Isotype	IgG	
Species Reactivity	human, mouse, rat	
Tested Application	WB, IHC	
Contents	500 ug/ml antibody with PBS, 0.02% NaN ₃ , 1 mg/ml BSA and 50% glycerol.	
Immunogen	E. coli-derived human PSAT1 recombinant protein (Position: Q276-L370). Human PSAT1 shares 90.5% amino acid (aa) sequence identity with mouse PSAT1.	
Concentration	500 ug/ml	
Purification	Immunogen affinity purified.	
Observed MW	40 kDa	
Dilution Ratios	Western blot (WB):	1:500-2000
	Immunohistochemistry (IHC):	1:50-400
	(Boiling the paraffin sections in 10mM citrate buffer, pH6.0, or PH8.0 EDTA repair liquid for 20 mins is required for the staining of formalin/paraffin sections.) Optimal working dilutions must be determined by end user.	

Storage

12 months from date of receipt, -20°C as supplied.

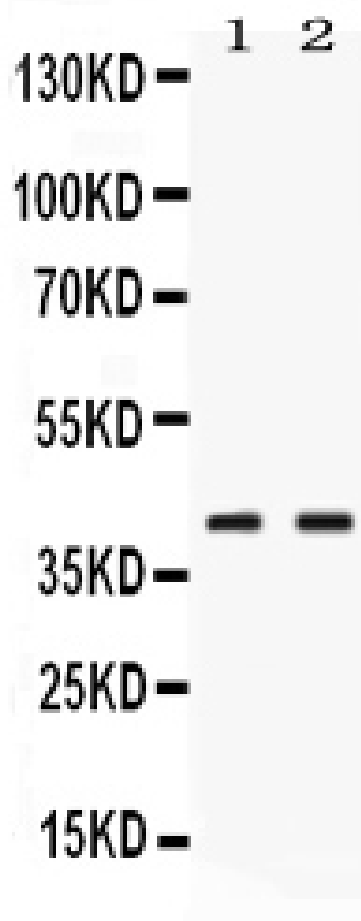
Background Information

Phosphoserine aminotransferase (PSA), also known as phosphohydroxythreonine aminotransferase (PSAT), is an enzyme that in humans is encoded by the PSAT1 gene. This gene encodes a member of the class-V pyridoxal-phosphate-dependent aminotransferase family. The encoded protein is a phosphoserine aminotransferase and decreased expression may be associated with schizophrenia. Mutations in this gene are also associated with phosphoserine aminotransferase deficiency. Alternative splicing results in multiple transcript variants.

Reference

Anti-PSAT1 Antibody被引用在2文献中。

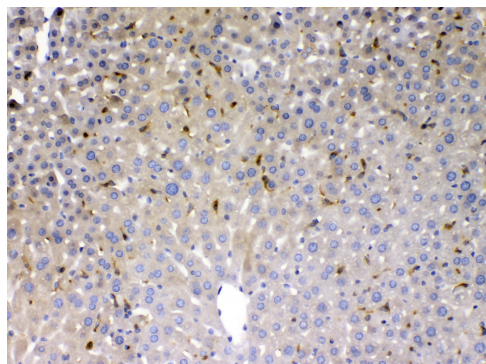
Selected Validation Data



Western blot analysis of PSAT1 using anti-PSAT1 antibody (PB10086). The sample well of each lane was loaded with 30 ug of sample under reducing conditions.

Lane 1: rat pancreas tissue lysates,
Lane 2: human Hela whole cell lysates.

After electrophoresis, proteins were transferred to a membrane. Then the membrane was incubated with rabbit anti-PSAT1 antigen affinity purified polyclonal antibody (PB10086) at a dilution of 1:1000 and probed with a goat anti-rabbit IgG-HRP secondary antibody (Catalog # BA1054). The signal is developed using ECL Plus Western Blotting Substrate (Catalog # AR1197). A specific band was detected for PSAT1 at approximately 40 kDa. The expected band size for PSAT1 is at 40 kDa.



IHC analysis of PSAT1 using anti-PSAT1 antibody (PB10086). PSAT1 was detected in a paraffin-embedded section of mouse liver tissue. Biotinylated goat anti-rabbit IgG was used as secondary antibody. The tissue section was incubated with rabbit anti-PSAT1 Antibody (PB10086) at a dilution of 1:200 and developed using Streptavidin-Biotin-Complex (SABC) (Catalog # SA1022) with DAB (Catalog # AR1027) as the chromogen.