

## Basic Information

Product Name	Anti-BMP15 Antibody
Gene Name	BMP15
Source	Rabbit
Clonality	Polyclonal
Isotype	IgG
Species Reactivity	human
Tested Application	WB
Contents	500 ug/ml antibody with PBS, 0.02% NaN <sub>3</sub> , 1 mg/ml BSA and 50% glycerol.
Immunogen	E. coli-derived human BMP15 recombinant protein (Position: Q268-R392). Human BMP15 shares 69.6% amino acid (aa) sequence identity with mouse BMP15.
Concentration	500 ug/ml
Purification	Immunogen affinity purified.
Observed MW	45 kDa
Dilution Ratios	Western blot (WB):1:500-2000

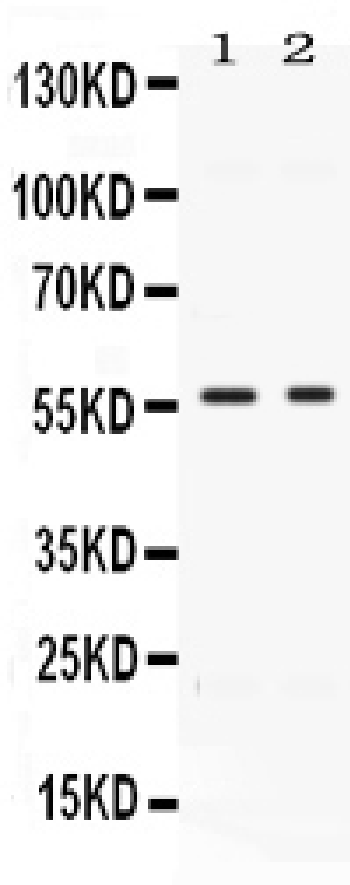
## Storage

12 months from date of receipt, -20°C as supplied.

## Background Information

Bone morphogenetic protein 15 is a protein that in humans is encoded by the BMP15 gene. It's mainly involved in folliculogenesis. The protein encoded by this gene is a member of the bone morphogenetic protein family which is part of the transforming growth factor-beta superfamily. The transforming growth factor-beta superfamily includes large families of growth and differentiation factors. It is thought that this protein may be involved in oocyte maturation and follicular development as a homodimer or by forming heterodimers with a related protein, Gdf9. Defects in this gene are the cause of ovarian dysgenesis 2.

## Selected Validation Data



Western blot analysis of BMP15 using anti-BMP15 antibody (PB1103). The sample well of each lane was loaded with 30 ug of sample under reducing conditions.

Lane 1: human Hela whole cell lysates,

Lane 2: human MCF-7 whole cell lysates.

After electrophoresis, proteins were transferred to a membrane. Then the membrane was incubated with rabbit anti-BMP15 antigen affinity purified polyclonal antibody (PB1103) at a dilution of 1:1000 and probed with a goat anti-rabbit IgG-HRP secondary antibody (Catalog # BA1054). The signal is developed using ECL Plus Western Blotting Substrate (Catalog # AR1197). A specific band was detected for BMP15 at approximately 45 kDa. The expected band size for BMP15 is at 45 kDa.