

## Basic Information

Product Name	Anti-CCDC6 Antibody	
Gene Name	CCDC6	
Source	Rabbit	
Clonality	Polyclonal	
Isotype	IgG	
Species Reactivity	human, mouse, rat	
Tested Application	WB, ICC/IF, FCM	
Contents	500 ug/ml antibody with PBS, 0.02% NaN <sub>3</sub> , 1 mg/ml BSA and 50% glycerol.	
Immunogen	A synthetic peptide corresponding to a sequence at the N-terminus of human CCDC6 identical to the related mouse sequence.	
Concentration	500 ug/ml	
Purification	Immunogen affinity purified.	
Observed MW	66 kDa	
Dilution Ratios	Western blot (WB): 1:500-2000 Immunocytochemistry/Immunofluorescence (ICC/IF): 1:50-400 Flow Cytometry (Fixed): 1:50-200	

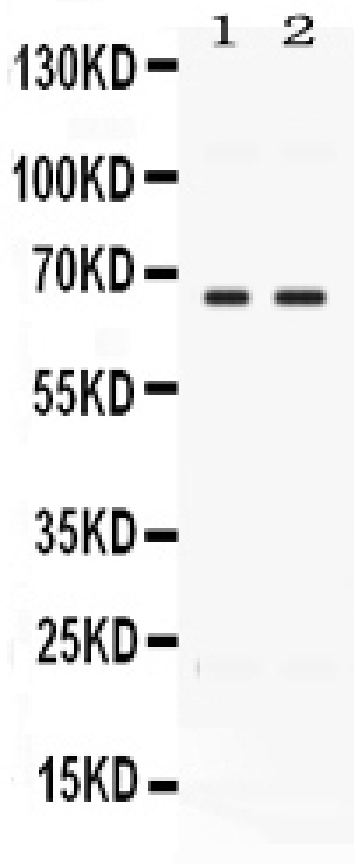
## Storage

12 months from date of receipt, -20°C as supplied.

## Background Information

Coiled-coil domain-containing protein 6 is a protein that in humans is encoded by the CCDC6 gene. This gene encodes a coiled-coil domain-containing protein. The encoded protein is ubiquitously expressed and may function as a tumor suppressor. A chromosomal rearrangement resulting in the expression of a fusion gene containing a portion of this gene and the intracellular kinase-encoding domain of the ret proto-oncogene is the cause of thyroid papillary carcinoma.

## Selected Validation Data

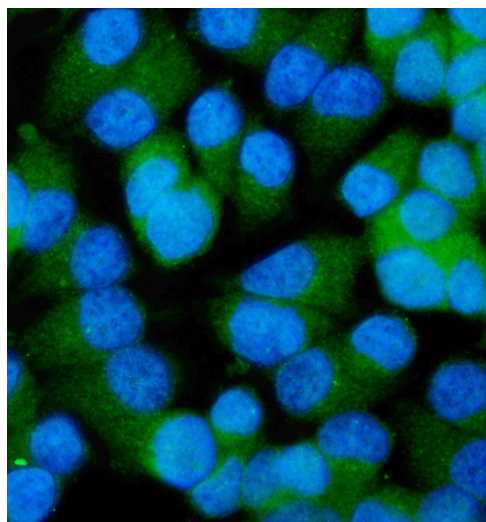


Western blot analysis of CCDC6 using anti-CCDC6 antibody (PB1106). The sample well of each lane was loaded with 30 ug of sample under reducing conditions.

Lane 1: rat testis muscle tissue lysates,

Lane 2: human MCF-7 whole cell lysates.

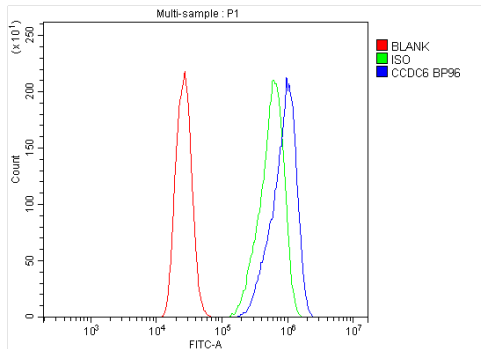
After electrophoresis, proteins were transferred to a membrane. Then the membrane was incubated with rabbit anti-CCDC6 antigen affinity purified polyclonal antibody (PB1106) at a dilution of 1:1000 and probed with a goat anti-rabbit IgG-HRP secondary antibody (Catalog # BA1054). The signal is developed using ECL Plus Western Blotting Substrate (Catalog # AR1197). A specific band was detected for CCDC6 at approximately 66 kDa. The expected band size for CCDC6 is at 53 kDa.



IF analysis of CCDC6 using anti-CCDC6 antibody (PB1106).

CCDC6 was detected in an immunocytochemical section of T-47D cells.

The section was incubated with rabbit anti-CCDC6 Antibody (PB1106) at a dilution of 1:100. DyLight®488 Conjugated Goat Anti-Rabbit IgG (Green) (Catalog # BA1127) was used as secondary antibody. The section was counterstained with DAPI (Catalog # AR1176) (Blue).



Flow Cytometry analysis of Caco-2 cells using anti-CCDC6 antibody (PB1106).

Overlay histogram showing Caco-2 cells stained with PB1106 (Blue line).

To facilitate intracellular staining, cells were fixed with 4% paraformaldehyde and permeabilized with permeabilization buffer. The cells were blocked with 10% normal goat serum. And then incubated with rabbit anti-CCDC6 Antibody (PB1106) at 1:100 dilution for 30 min at 20°C. DyLight®488 conjugated goat anti-rabbit IgG (BA1127) was used as secondary antibody at 1:100 dilution for 30 minutes at 20°C. Isotype control antibody (Green line) was rabbit IgG at 1:100 dilution used under the same conditions. Unlabelled sample without incubation with primary antibody and secondary antibody (Red line) was used as a blank control.