

Basic Information

Product Name	Anti-CXCL16 Antibody	
Gene Name	CXCL16	
Source	Rabbit	
Clonality	Polyclonal	
Isotype	IgG	
Species Reactivity	human	
Tested Application	WB, ELISA	
Contents	500 ug/ml antibody with PBS, 0.02% NaN ₃ , 1 mg/ml BSA and 50% glycerol.	
Immunogen	E. coli-derived human CXCL16 recombinant protein (Position: N30-A196). Human CXCL16 shares 47% and 45.7% amino acid (aa) sequence identity with mouse and rat CXCL16, respectively.	
Concentration	500 ug/ml	
Purification	Immunogen affinity purified.	
Observed MW	35 kDa	
Dilution Ratios	Western blot (WB): 1:500-2000 Enzyme linked immunosorbent assay (ELISA):1:100-1000	

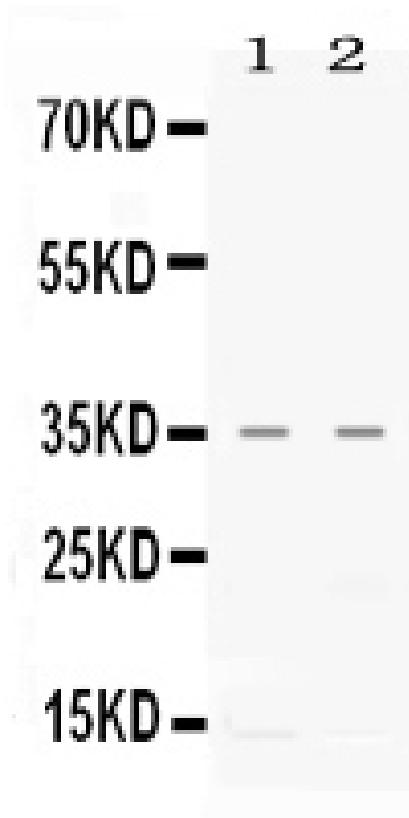
Storage

12 months from date of receipt, -20°C as supplied.

Background Information

CXCL16, Chemokine (C-X-C motif) ligand 16, is a small cytokine belonging to the CXC chemokine family. Larger than other chemokines (with 254 amino acids), CXCL16 is composed of a CXC chemokine domain, a mucin-like stalk, a transmembrane domain and a cytoplasmic tail containing a potential tyrosine phosphorylation site that may bind SH2. By somatic cell hybrid analysis, the CXCL16 gene is mapped to 17p13, a locus separate from all other known chemokines. Chemotaxis assays found that CXCL16 induced a strong chemotactic response in activated CD8 T cells. In addition, CXCL16 induced calcium mobilization.

Selected Validation Data



Western blot analysis of CXCL16 using anti-CXCL16 antibody (PB1110).

The sample well of each lane was loaded with 30 ug of sample under reducing conditions.

Lane 1: human CEM whole cell lysates,

Lane 2: human A549 whole cell lysates.

After electrophoresis, proteins were transferred to a membrane. Then the membrane was incubated with rabbit anti-CXCL16 antigen affinity purified polyclonal antibody (PB1110) at a dilution of 1:1000 and probed with a goat anti-rabbit IgG-HRP secondary antibody (Catalog # BA1054). The signal is developed using ECL Plus Western Blotting Substrate (Catalog # AR1197). A specific band was detected for CXCL16 at approximately 35 kDa. The expected band size for CXCL16 is at 28 kDa.