

## Basic Information

Product Name	Anti-ICAM1 Antibody	
Gene Name	ICAM1	
Source	Rabbit	
Clonality	Polyclonal	
Isotype	IgG	
Species Reactivity	mouse, rat	
Tested Application	WB, IHC	
Contents	500 ug/ml antibody with PBS, 0.02% NaN <sub>3</sub> , 1 mg/ml BSA and 50% glycerol.	
Immunogen	E.coli-derived mouse ICAM1 recombinant protein (Position: G198-P537). Mouse ICAM1 shares 74% amino acid (aa) sequence identity with rat ICAM1.	
Concentration	500 ug/ml	
Purification	Immunogen affinity purified.	
Observed MW	90-110 kDa	
Dilution Ratios	Western blot (WB): 1:500-2000 Immunohistochemistry (IHC): 1:50-400 (Boiling the paraffin sections in 10mM citrate buffer, pH6.0, or PH8.0 EDTA repair liquid for 20 mins is required for the staining of formalin/paraffin sections.) Optimal working dilutions must be determined by end user.	

## Storage

12 months from date of receipt, -20°C as supplied.

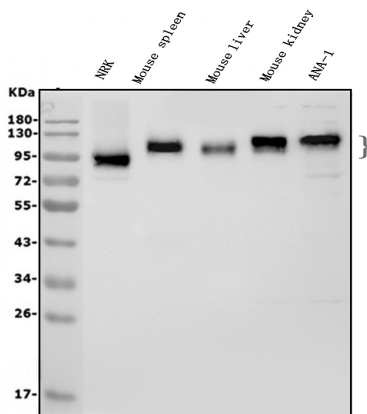
## Background Information

Intercellular adhesion molecule-1 (ICAM-1) is an integral membrane protein, a member of the immunoglobulin superfamily, and a ligand for lymphocyte function-associated (LFA) antigens, a beta 2 leukocyte integrin. The normal function of human ICAM-1 is to provide adhesion between endothelial cells and leukocytes after injury or stress. ICAM-1 binds to leukocyte function-associated antigen (LFA-1) or macrophage-1 antigen (Mac-1). It is found on leukocytes, fibroblasts, epithelial cells and endothelial cells and its expression is regulated by inflammatory cytokines. ICAM-1 has a tissue distribution similar to that of the major histocompatibility complex class II antigens and is likely to play a role in inflammatory responses.

## Reference

Anti-ICAM1 Antibody被引用在15文献中。

## Selected Validation Data



Western blot analysis of ICAM1 using anti-ICAM1 antibody (PB9018). The sample well of each lane was loaded with 30 ug of sample under reducing conditions.

Lane 1: rat NRK whole cell lysates,

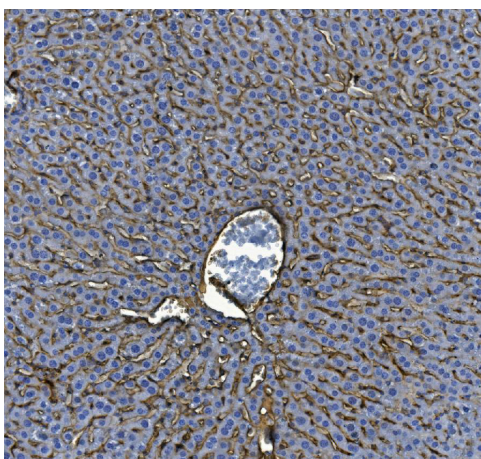
Lane 2: mouse spleen tissue lysates,

Lane 3: mouse liver tissue lysates,

Lane 4: mouse kidney tissue lysates,

Lane 5: mouse ANA-1 whole cell lysates.

After electrophoresis, proteins were transferred to a membrane. Then the membrane was incubated with rabbit anti-ICAM1 antigen affinity purified polyclonal antibody (PB9018) at a dilution of 1:1000 and probed with a goat anti-rabbit IgG-HRP secondary antibody (Catalog # BA1054). The signal is developed using ECL Plus Western Blotting Substrate (Catalog # AR1197). A specific band was detected for ICAM1 at approximately 90-110 kDa. The expected band size for ICAM1 is at 59 kDa.



IHC analysis of ICAM1 using anti-ICAM1 antibody (PB9018).

ICAM1 was detected in a paraffin-embedded section of mouse liver tissue.

Biotinylated goat anti-rabbit IgG was used as secondary antibody. The

tissue section was incubated with rabbit anti-ICAM1 Antibody (PB9018) at

a dilution of 1:200 and developed using Streptavidin-Biotin-Complex

(SABC) (Catalog # SA1022) with DAB (Catalog # AR1027) as the

chromogen.