

## Basic Information

<b>Product Name</b>	Anti-Cathepsin D/CTSD Antibody	
<b>Gene Name</b>	CTSD	
<b>Source</b>	Rabbit	
<b>Clonality</b>	Polyclonal	
<b>Isotype</b>	IgG	
<b>Species Reactivity</b>	mouse, rat	
<b>Tested Application</b>	WB, IHC	
<b>Contents</b>	500 ug/ml antibody with PBS, 0.02% NaN <sub>3</sub> , 1 mg/ml BSA and 50% glycerol.	
<b>Immunogen</b>	E.coli-derived mouse Cathepsin D recombinant protein (Position: E65-L410). Mouse Cathepsin D shares 85% and 91% amino acid (aa) sequences identity with human and rat Cathepsin D, respectively.	
<b>Concentration</b>	500 ug/ml	
<b>Purification</b>	Immunogen affinity purified.	
<b>Observed MW</b>	28,45 kDa	
<b>Dilution Ratios</b>	Western blot (WB):	1:500-2000
	Immunohistochemistry (IHC):	1:50-400
	(Boiling the paraffin sections in 10mM citrate buffer,pH6.0,or PH8.0 EDTA repair liquid for 20 mins is required for the staining of formalin/paraffin sections.) Optimal working dilutions must be determined by end user.	

## Storage

12 months from date of receipt, -20°C as supplied.

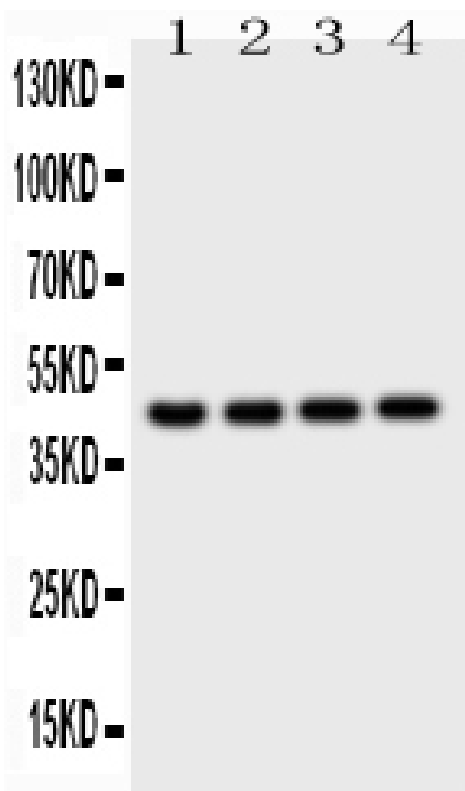
## Background Information

Cathepsin D is a protein that in humans is encoded by the CTSD gene. This proteinase is a member of the peptidase C1 family, having a specificity similar to but narrower than that of pepsin A. It is mapped to 11p15.5. The cDNA encodes a 412-amino acid protein with 20 and 44 amino acids in a pre- and prosegment, respectively. Cathepsin D is one of the lysosomal proteinases. It is ubiquitously expressed and is involved in proteolytic degradation, cell invasion, and apoptosis. Mutations in this gene are involved in the pathogenesis of several diseases, including breast cancer and possibly Alzheimer disease and it has been considered as a breast cancer tumor marker.

## Reference

Anti-Cathepsin D/CTSD Antibody 被引用在1文献中。

## Selected Validation Data



Western blot analysis of Cathepsin D/CTSD using anti-Cathepsin D/CTSD antibody (PB9048). The sample well of each lane was loaded with 30 ug of sample under reducing conditions.

Lane 1: mouse liver tissue lysates,

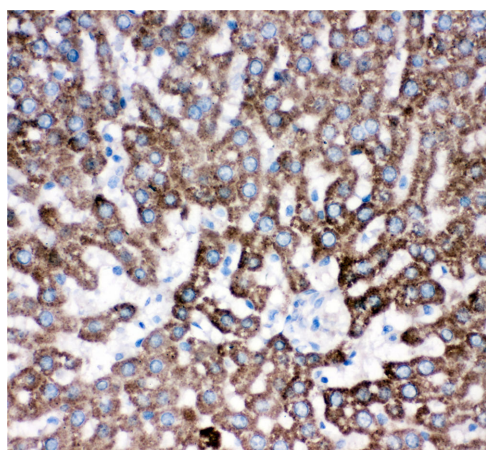
Lane 2: mouse brain tissue lysates,

Lane 3: mouse thymus tissue lysates,

Lane 4: mouse Neuro-2a whole cell lysates.

After electrophoresis, proteins were transferred to a membrane.

Then the membrane was incubated with rabbit anti-Cathepsin D/CTSD antigen affinity purified polyclonal antibody (PB9048) at a dilution of 1:1000 and probed with a goat anti-rabbit IgG-HRP secondary antibody (Catalog # BA1054). The signal is developed using ECL Plus Western Blotting Substrate (Catalog # AR1197). A specific band was detected for Cathepsin D/CTSD at approximately 45 kDa. The expected band size for Cathepsin D/CTSD is at 45 kDa.



IHC analysis of Cathepsin D/CTSD using anti-Cathepsin D/CTSD antibody (PB9048) .

Cathepsin D/CTSD was detected in a paraffin-embedded section of mouse kidney tissue. The tissue section was incubated with rabbit anti-Cathepsin D/CTSD Antibody (PB9048) at a dilution of 1:200 and developed using HRP Conjugated Rabbit IgG Super Vision Assay Kit (Catalog # SV0002) with DAB (Catalog # AR1027) as the chromogen.

Product datasheet

## Anti-Cathepsin D/CTSD Antibody

Catalog Number: **PB9048**

**BOSTER**<sup>®</sup>

antibody and ELISA experts

**BOSTER BIOLOGICAL TECHNOLOGY**

Building C21, 3rd to 5th Floors, Optics Valley Biopharmaceutical Accelerator,  
East Lake High-Tech Development Zone, Wuhan.

**Web:** [www.boster.com](http://www.boster.com) **Phone:** 027-67845390/1/2 **Email:** [boster@boster.com](mailto:boster@boster.com)