

Basic Information

Product Name	Anti-Desmin/DES Antibody	
Gene Name	DES	
Source	Rabbit	
Clonality	Polyclonal	
Isotype	IgG	
Species Reactivity	human, mouse, rat	
Tested Application	WB, IHC, IF	
Contents	500 ug/ml antibody with PBS, 0.02% NaN ₃ , 1 mg/ml BSA and 50% glycerol.	
Immunogen	E.coli-derived human Desmin recombinant protein (Position: M1-T304). Human Desmin shares 97% amino acid (aa) sequences identity with both mouse and rat Desmin.	
Concentration	500 ug/ml	
Purification	Immunogen affinity purified.	
Observed MW	54 kDa	
Dilution Ratios	Western blot (WB): 1:1000-5000 Immunohistochemistry (IHC): 1:50-400 Immunofluorescence (IF): 1:50-400 (Boiling the paraffin sections in 10mM citrate buffer,pH6.0,or PH8.0 EDTA repair liquid for 20 mins is required for the staining of formalin/paraffin sections.) Optimal working dilutions must be determined by end user.	

Storage

12 months from date of receipt, -20°C as supplied. 6 months 2 to 8°C after reconstitution. Avoid repeated freezing and thawing.

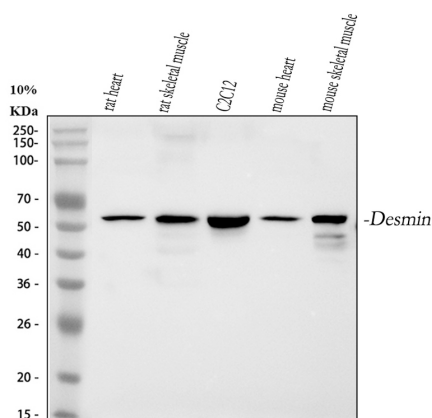
Background Information

DES, also called desmin, is a protein that in humans is encoded by the DES gene, and this gene is mapped to 2q35. DES is the muscle-specific member of the intermediate filament (IF) protein family. It is one of the earliest myogenic markers, both in heart and somites, and is expressed in satellite stem cells and replicating myoblasts. DES is very important in muscle cell architecture and structure since it connects many components of the cytoplasm. It may be also play an important role in mitochondria function. What's more, DES provides attachments between the terminal Z disc and membrane-associated proteins to form a force-transmitting system that parallels the thin filaments at myotendinous junctions.

Reference

Anti-Desmin/DES Antibody被引用在6文献中。

Selected Validation Data



Western blot analysis of Desmin/DES using anti-Desmin/DES antibody (PB9105). The sample well of each lane was loaded with 30 ug of sample under reducing conditions.

Lane 1: rat heart tissue lysates,

Lane 2: rat skeletal muscle tissue lysates,

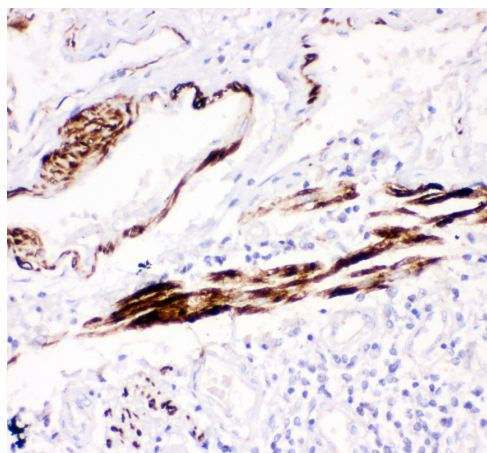
Lane 3: mouse C2C12 whole cell lysates,

Lane 4: mouse heart tissue lysates,

Lane 5: mouse skeletal muscle tissue lysates.

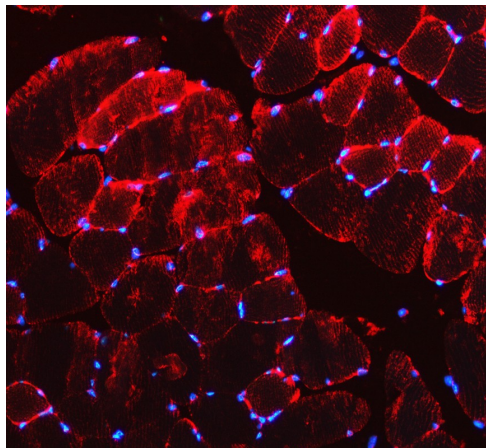
After electrophoresis, proteins were transferred to a membrane.

Then the membrane was incubated with rabbit anti-Desmin/DES antigen affinity purified polyclonal antibody (PB9105) at a dilution of 1:1000 and probed with a goat anti-rabbit IgG-HRP secondary antibody (Catalog # BA1054). The signal is developed using ECL Plus Western Blotting Substrate (Catalog # AR1197). A specific band was detected for Desmin/DES at approximately 54 kDa. The expected band size for Desmin/DES is at 54 kDa.



IHC analysis of Desmin/DES using anti-Desmin/DES antibody (PB9105) .

Desmin/DES was detected in a paraffin-embedded section of human lung cancer tissue. The tissue section was incubated with rabbit anti-Desmin/DES Antibody (PB9105) at a dilution of 1:200 and developed using HRP Conjugated Rabbit IgG Super Vision Assay Kit (Catalog # SV0002) with DAB (Catalog # AR1027) as the chromogen.



IF analysis of Desmin/DES using anti-Desmin/DES antibody (PB9105).

Desmin/DES was detected in a paraffin-embedded section of mouse skeletal muscle tissue. The tissue section was incubated with rabbit anti-Desmin/DES Antibody (PB9105) at a dilution of 1:100. Cy3-conjugated Anti-rabbit IgG Secondary Antibody (red)(Catalog#BA1032) was used as secondary antibody. The section was counterstained with DAPI (Catalog # AR1176) (Blue).