

## Basic Information

<b>Product Name</b>	Anti-CD18/ITGB2 Antibody	
<b>Gene Name</b>	ITGB2	
<b>Source</b>	Rabbit	
<b>Clonality</b>	Polyclonal	
<b>Isotype</b>	IgG	
<b>Species Reactivity</b>	human	
<b>Tested Application</b>	WB, IHC, IF	
<b>Contents</b>	500 ug/ml antibody with PBS, 0.02% NaN <sub>3</sub> , 1 mg/ml BSA and 50% glycerol.	
<b>Immunogen</b>	E.coli-derived human CD18 recombinant protein (Position: Q404-S769). Human CD18 shares 76% amino acid (aa) sequence identity with mouse CD18.	
<b>Concentration</b>	500 ug/ml	
<b>Purification</b>	Immunogen affinity purified.	
<b>Observed MW</b>	90-100 kDa	
<b>Dilution Ratios</b>	Western blot (WB):	1:500-2000
	Immunohistochemistry (IHC):	1:50-400
	Immunofluorescence (IF):	1:50-400
	(Boiling the paraffin sections in 10mM citrate buffer,pH6.0,or PH8.0 EDTA repair liquid for 20 mins is required for the staining of formalin/paraffin sections.) Optimal working dilutions must be determined by end user.	

## Storage

12 months from date of receipt, -20°C as supplied.

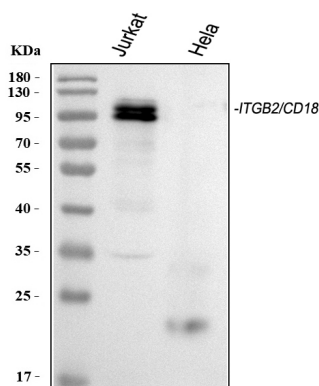
## Background Information

ITGB2(INTEGRIN, BETA-2), also known as CD18, is a protein that in humans is encoded by the ITGB2 gene. ITGB2 is an integrin protein that belongs to the class of cell membrane glycoproteins. The beta-2 integrin chain gene is designated ITGB2 and the leukocyte antigen has been designated CD18. The ITGB2 gene is mapped to 21q22.3. The expression of CD18 is increased in lymphoblastoid cells from persons with Down syndrome, consistent with the location of the gene on chromosome 21. In humans lack of ITGB2 causes Leukocyte Adhesion Deficiency, a disease defined by a lack of leukocyte extravasation from blood into tissues. Although ITGB2 is expressed on the cell surface at normal levels and is capable of function following extracellular stimulation, it could not be activated via the 'inside-out' signaling pathways.

## Reference

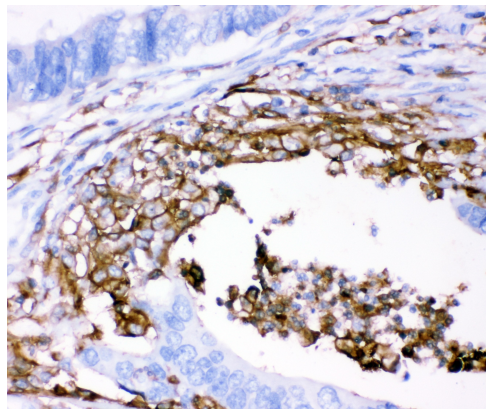
Anti-CD18/ITGB2 Antibody被引用在1文献中。

## Selected Validation Data



Western blot analysis of anti-ITGB2 antibody (PB9141). The sample well of each lane was loaded with 30ug of sample under reducing conditions. Lane 1: human Jurkat whole cell lysates, Lane 2: human Hela whole cell lysates.

Use rabbit anti-ITGB2 1:1000, probed with a goat anti-rabbit IgG-HRP secondary antibody. The signal is developed using an Enhanced Chemiluminescent detection (ECL) kit (Catalog#EK1002). A specific band was detected for ITGB2 at approximately 90-100KD. The expected band size for ITGB2 is at 85KD.



IHC analysis of CD18/ITGB2 using anti-CD18/ITGB2 antibody (PB9141). CD18/ITGB2 was detected in a paraffin-embedded section of human intestinal cancer tissue. The tissue section was incubated with rabbit anti-CD18/ITGB2 Antibody (PB9141) at a dilution of 1:200 and developed using HRP Conjugated Rabbit IgG Super Vision Assay Kit (Catalog # SV0002) with DAB (Catalog # AR1027) as the chromogen.

Product datasheet

## Anti-CD18/ITGB2 Antibody

Catalog Number: **PB9141**

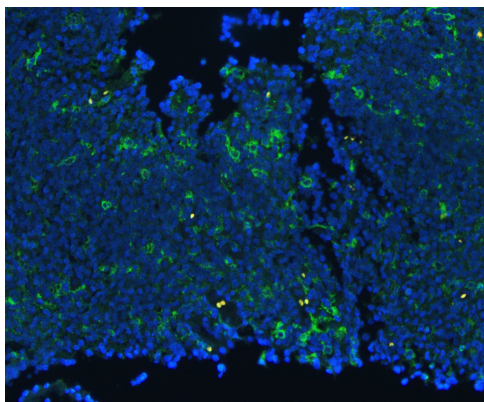
**BOSTER**<sup>®</sup>

antibody and ELISA experts

**BOSTER BIOLOGICAL TECHNOLOGY**

Building C21, 3rd to 5th Floors, Optics Valley Biopharmaceutical Accelerator,  
East Lake High-Tech Development Zone, Wuhan.

**Web:** [www.boster.com](http://www.boster.com) **Phone:** 027-67845390/1/2 **Email:** [boster@boster.com](mailto:boster@boster.com)



IF analysis using anti- ITGB2 antibody (PB9141). detected in paraffin-embedded section of human tonsil tissue. The tissue section were stained using the Dylight488-conjugated Anti-rabbit IgG Secondary Antibody (green)(Catalog#BA1127) and counterstained with DAPI (blue).