

Basic Information

Product Name	Anti-Alpha 1 Antitrypsin/SERPINA1 Antibody	
Gene Name	SERPINA1	
Source	Rabbit	
Clonality	Polyclonal	
Isotype	IgG	
Species Reactivity	mouse, rat	
Tested Application	WB, IHC	
Contents	500 ug/ml antibody with PBS, 0.02% NaN ₃ , 1 mg/ml BSA and 50% glycerol.	
Immunogen	E.coli-derived rat SERPINA1 recombinant protein (Position: K211-R411). Rat SERPINA1 shares 66% amino acid (aa) sequence identity with human SERPINA1.	
Concentration	500 ug/ml	
Purification	Immunogen affinity purified.	
Observed MW	53 kDa	
Dilution Ratios	Western blot (WB): 1:500-2000 Immunohistochemistry (IHC): 1:50-400 (Boiling the paraffin sections in 10mM citrate buffer, pH6.0, or PH8.0 EDTA repair liquid for 20 mins is required for the staining of formalin/paraffin sections.) Optimal working dilutions must be determined by end user.	

Storage

12 months from date of receipt, -20°C as supplied.

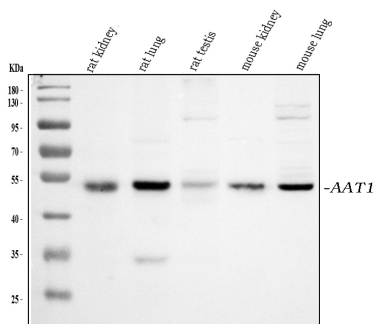
Background Information

SERPINA1 is also known as PI, A1A or AAT. The protein encoded by this gene is secreted and is a serine protease inhibitor whose targets include elastase, plasmin, thrombin, trypsin, chymotrypsin, and plasminogen activator. Defects in this gene can cause emphysema or liver disease. Several transcript variants encoding the same protein have been found for this gene.

Reference

Anti-Alpha 1 Antitrypsin/SERPINA1 Antibody被引用在3文献中。

Selected Validation Data



Western blot analysis of Alpha 1 Antitrypsin/SERPINA1 using anti-Alpha 1 Antitrypsin/SERPINA1 antibody (PB9354). The sample well of each lane was loaded with 30 ug of sample under reducing conditions.

Lane 1: rat kidney tissue lysates,

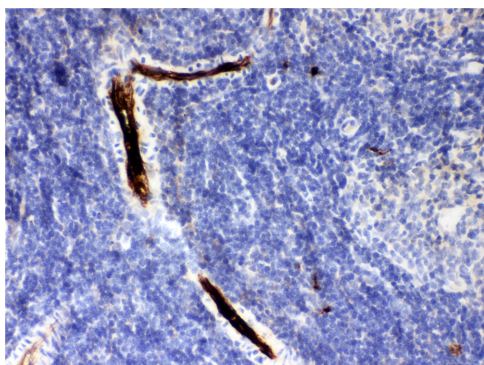
Lane 2: rat lung tissue lysates,

Lane 3: rat testis tissue lysates,

Lane 4: mouse kidney tissue lysates,

Lane 5: mouse lung tissue lysates.

After electrophoresis, proteins were transferred to a membrane. Then the membrane was incubated with rabbit anti-Alpha 1 Antitrypsin/SERPINA1 antigen affinity purified polyclonal antibody (PB9354) at a dilution of 1:1000 and probed with a goat anti-rabbit IgG-HRP secondary antibody (Catalog # BA1054). The signal is developed using ECL Plus Western Blotting Substrate (Catalog # AR1197). A specific band was detected for Alpha 1 Antitrypsin/SERPINA1 at approximately 53 kDa. The expected band size for Alpha 1 Antitrypsin/SERPINA1 is at 46 kDa.



IHC analysis of Alpha 1 Antitrypsin/SERPINA1 using anti-Alpha 1 Antitrypsin/SERPINA1 antibody (PB9354).

Alpha 1 Antitrypsin/SERPINA1 was detected in a paraffin-embedded section of rat spleen tissue. Biotinylated goat anti-rabbit IgG was used as secondary antibody. The tissue section was incubated with rabbit anti-Alpha 1 Antitrypsin/SERPINA1 Antibody (PB9354) at a dilution of 1:200 and developed using Streptavidin-Biotin-Complex (SABC) (Catalog # SA1022) with DAB (Catalog # AR1027) as the chromogen.