

Basic Information

| | | |
|---------------------------|-------------------------------------------------------------------------------------------------------------------------------------------------------------------------------------------------------------------------------------------------------------------------------------------------------------------------------|--------------------------------------|
| Product Name | Anti-P-Selectin/SELP Antibody | |
| Gene Name | SELP | |
| Source | Rabbit | |
| Clonality | Polyclonal | |
| Isotype | IgG | |
| Species Reactivity | human | |
| Tested Application | WB, IHC, ELISA | |
| Contents | 500 ug/ml antibody with PBS, 0.02% NaN ₃ , 1 mg/ml BSA and 50% glycerol. | |
| Immunogen | E.coli-derived human CD62P recombinant protein (Position: W42-G271). Human CD62P shares 75% and 76% amino acid (aa) sequence identity with mouse and rat CD62P, respectively. | |
| Concentration | 500 ug/ml | |
| Purification | Immunogen affinity purified. | |
| Observed MW | 140 kDa | |
| Dilution Ratios | Western blot (WB): Immunohistochemistry (IHC): Enzyme linked immunosorbent assay (ELISA): (Boiling the paraffin sections in 10mM citrate buffer,pH6.0,or PH8.0 EDTA repair liquid for 20 mins is required for the staining of formalin/paraffin sections.) Optimal working dilutions must be determined by end user. | 1:500-2000 1:50-400 1:100-1000 |

Storage

12 months from date of receipt, -20°C as supplied.

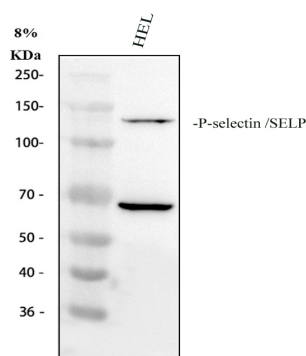
Background Information

CD62P is also known as SELP or P-selectin. This gene encodes a 140 kDa protein that is stored in the alpha-granules of platelets and Weibel-Palade bodies of endothelial cells. This protein redistributes to the plasma membrane during platelet activation and degranulation and mediates the interaction of activated endothelial cells or platelets with leukocytes. The membrane protein is a calcium-dependent receptor that binds to sialylated forms of Lewis blood group carbohydrate antigens on neutrophils and monocytes. Alternative splice variants may occur but are not well documented.

Reference

Anti-P-Selectin/SELP Antibody被引用在2文献中。

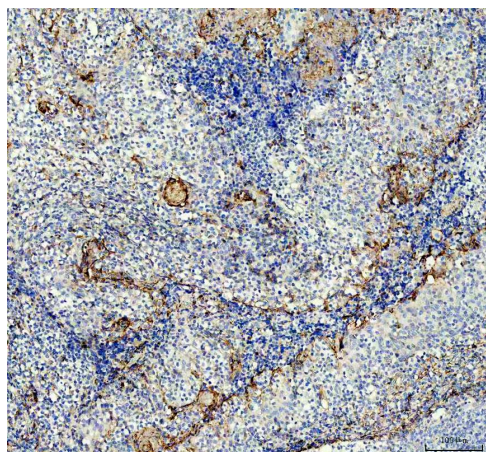
Selected Validation Data



Western blot analysis of P-Selectin/SELP using anti-P-Selectin/SELP antibody (PB9363). The sample well of each lane was loaded with 30 ug of sample under reducing conditions.

Lane 1: human HEL whole cell tissue lysates.

After electrophoresis, proteins were transferred to a membrane. Then the membrane was incubated with rabbit anti-P-Selectin/SELP antigen A03957-Aen affinity purified polyclonal antibody (PB9363) at a dilution of 1:1000 and probed with a goat anti-rabbit IgG-HRP secondary antibody (Catalog # BA1054). The signal is developed using ECL Plus Western Blotting Substrate (Catalog # AR1197). A specific band was detected for P-Selectin/SELP at approximately 140 kDa. The expected band size for P-Selectin/SELP is at 91 kDa.



IHC analysis of P-Selectin/SELP using anti-P-Selectin/SELP antibody (PB9363).

P-Selectin/SELP was detected in a paraffin-embedded section of human tonsil tissue. The tissue section was incubated with rabbit anti-P-Selectin/SELP Antibody (PB9363) at a dilution of 1:200 and developed using HRP Conjugated Rabbit IgG Super Vision Assay Kit (Catalog # SV0002) with DAB (Catalog # AR1027) as the chromogen.