

Basic Information

Product Name	Anti-BSEP/ABCB11 Antibody	
Gene Name	ABCB11	
Source	Rabbit	
Clonality	Polyclonal	
Isotype	IgG	
Species Reactivity	human, mouse, rat	
Tested Application	WB, IHC, IF	
Contents	500 ug/ml antibody with PBS, 0.02% NaN ₃ , 1 mg/ml BSA and 50% glycerol.	
Immunogen	A synthetic peptide corresponding to a sequence at the C-terminus of human ABCB11, different from the related mouse and rat sequences by three amino acids.	
Concentration	500 ug/ml	
Purification	Immunogen affinity purified.	
Observed MW	146 kDa	
Dilution Ratios	Western blot (WB): 1:500-2000 Immunohistochemistry (IHC): 1:50-400 Immunofluorescence (IF): 1:50-400 (Boiling the paraffin sections in 10mM citrate buffer,pH6.0,or PH8.0 EDTA repair liquid for 20 mins is required for the staining of formalin/paraffin sections.) Optimal working dilutions must be determined by end user.	

Storage

12 months from date of receipt, -20°C as supplied.

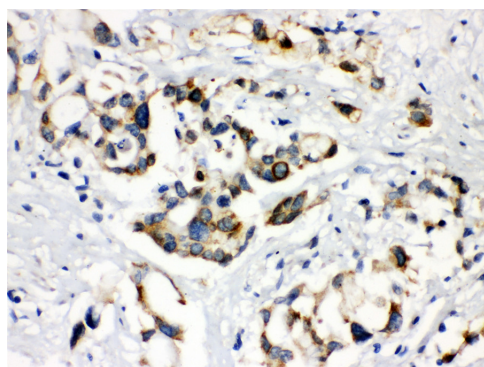
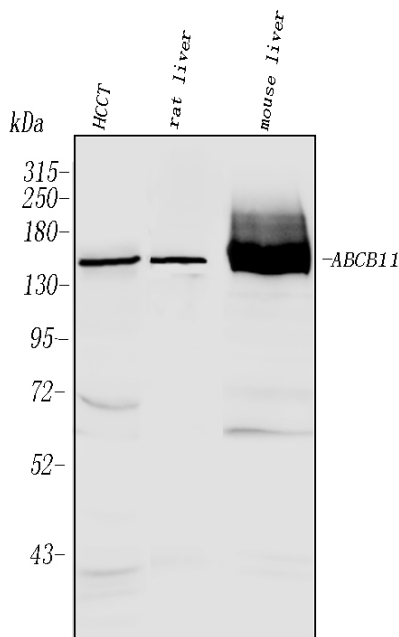
Background Information

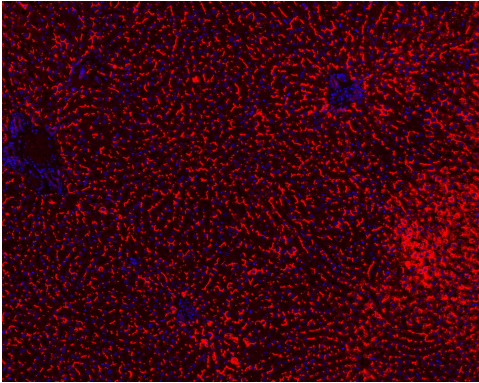
Bile Salt Export Pump (BSEP) is a protein which in humans is encoded by the ABCB 11 gene. It is a member of the superfamily of ATP-binding cassette (ABC) transporters, also known as ABCB11. It is mapped to chromosome 2q24. The BSEP protein is mainly expressed in the liver. ABCB11 is a gene associated with progressive familial intrahepatic cholestasis type 2 (PFIC2) which caused by mutations in the ABCB11 gene will increases the risk of hepatocellular carcinoma in early life.

Reference

Anti-BSEP/ABCB11 Antibody被引用在5文献中。

Selected Validation Data





IF analysis of ABCB11 using anti- ABCB11 antibody (PB9414)ABCB11 was detected in paraffin-embedded section of mouse liver tissues. Heat mediated antigen retrieval was performed in citrate buffer (pH6, epitope retrieval solution) for 20 mins. The tissue section was blocked with 10% goat serum. The tissue section was then incubated with 1µg/mL rabbit anti- ABCB11 Antibody (PB9414) overnight at 4°C. Cy3 Conjugated Goat Anti-Rabbit IgG (BA1032) was used as secondary antibody at 1:100 dilution and incubated for 30 minutes at 37°C. The section was counterstained with DAPI. Visualize using a fluorescence microscope and filter sets appropriate for the label used.