

Basic Information

Product Name	Anti-Plectin/PLEC Antibody	
Gene Name	PLEC	
Source	Rabbit	
Clonality	Polyclonal	
Isotype	IgG	
Species Reactivity	human, mouse, rat	
Tested Application	WB, IHC, ICC/IF	
Contents	500 ug/ml antibody with PBS, 0.02% NaN ₃ , 1 mg/ml BSA and 50% glycerol.	
Immunogen	A synthetic peptide corresponding to a sequence in the middle region of human Plectin, different from the related mouse sequence by one amino acid, and from the related rat sequence by two amino acids.	
Concentration	500 ug/ml	
Purification	Immunogen affinity purified.	
Observed MW	532 kDa	
Dilution Ratios	Western blot (WB):	1:500-2000
	Immunohistochemistry (IHC):	1:50-400
	Immunohistochemistry in frozen section (IHC-F):	1:50-400
	Immunocytochemistry/Immunofluorescence (ICC/IF):	1:50-400
	Flow cytometry (FCM):	1-3 µg/1x10 ⁶ cells
	(Boiling the paraffin sections in 10mM citrate buffer, pH6.0, or PH8.0 EDTA repair liquid for 20 mins is required for the staining of formalin/paraffin sections.) Optimal working dilutions must be determined by end user.	

Storage

12 months from date of receipt, -20°C as supplied.

Background Information

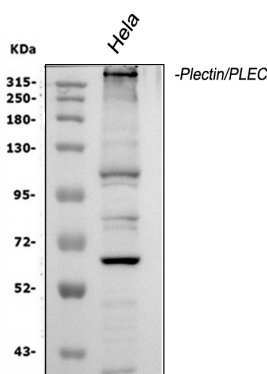
Plectin, known as PLEC, is a prominent member of an important family of structurally and in part functionally related proteins, termed plakins or cytolinkers, that are capable of interlinking different elements of the cytoskeleton. Plakins, with their multi-domain structure and enormous size, not only play crucial roles in maintaining cell and tissue integrity and orchestrating dynamic changes in cytoarchitecture and cell shape, but also serve as scaffolding platforms for the

assembly, positioning, and regulation of signaling complexes. Plectin is expressed as several protein isoforms in a wide range of cell types and tissues from a single gene located on chromosome 8 in humans. The plectin gene locus in mouse on chromosome 15 has been analyzed in detail, revealing a genomic exon-intron organization with well over 40 exons spanning over 62 kb and an unusual 5' transcript complexity of plectin isoforms. Eleven exons (1-1j) have been identified that alternatively splice directly into a common exon 2 which is the first exon to encode plectin's highly conserved actin binding domain (ABD).

Reference

Anti-Plectin/PLEC Antibody被引用在1文献中。

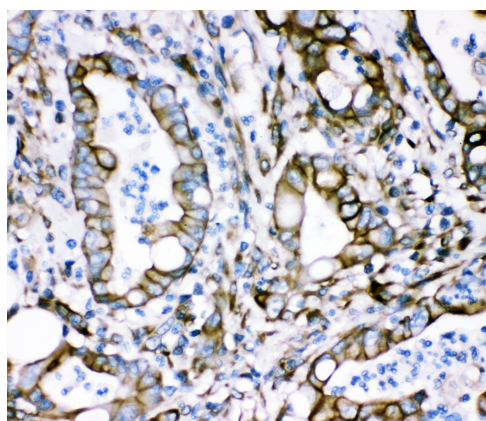
Selected Validation Data



Western blot analysis of anti- PLEC antibody (PB9430). The sample well of each lane was loaded with 30ug of sample under reducing conditions.

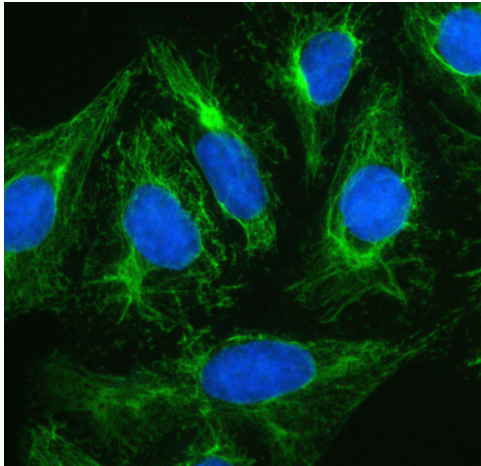
Lane 1: human Hela whole cell lysates.

Use rabbit anti- PLEC 1:1000, probed with a goat anti-rabbit IgG-HRP secondary antibody. The signal is developed using an Enhanced Chemiluminescent detection (ECL) kit (Catalog#EK1002). A specific band was detected for PLEC at approximately 532KD. The expected band size for PLEC is at 532KD.



IHC analysis of Plectin/PLEC using anti-Plectin/PLEC antibody (PB9430).

Plectin/PLEC was detected in a paraffin-embedded section of human intestine cancer tissue. The tissue section was incubated with rabbit anti-Plectin/PLEC Antibody (PB9430) at a dilution of 1:200 and developed using HRP Conjugated Rabbit IgG Super Vision Assay Kit (Catalog # SV0002) with DAB (Catalog # AR1027) as the chromogen.



ICC/IF analysis of Plectin/PLEC using anti-Plectin/PLEC antibody (PB9430).

Plectin/PLEC was detected in an immunocytochemical section of U2OS cells. The section was incubated with rabbit anti-Plectin/PLEC Antibody (PB9430) at a dilution of 1:100. Fluoro488 Conjugated Goat Anti-Rabbit IgG (Green) (Catalog # BA1127) was used as secondary antibody. The section was counterstained with DAPI (Catalog # AR1176) (Blue).