

Basic Information

Product Name	Anti-GLUT2/SLC2A2 Antibody	
Gene Name	SLC2A2	
Source	Rabbit	
Clonality	Polyclonal	
Isotype	IgG	
Species Reactivity	human	
Tested Application	WB, IHC	
Contents	500 ug/ml antibody with PBS, 0.02% NaN3, 1 mg/ml BSA and 50% glycerol.	
Immunogen	A synthetic peptide corresponding to a sequence at the C-terminus of human SLC2A2, different from the related mouse sequence by five amino acids, and from the related rat sequence by seven amino acids.	
Concentration	500 ug/ml	
Purification	Immunogen affinity purified.	
Observed MW	57 kDa	
Dilution Ratios	Western blot (WB): 1:500-2000 Immunohistochemistry (IHC): 1:50-400 (Boiling the paraffin sections in 10mM citrate buffer,pH6.0,or PH8.0 EDTA repair liquid for 20 mins is required for the staining of formalin/paraffin sections.) Optimal working dilutions must be determined by end user.	

Storage

12 months from date of receipt, -20°C as supplied.

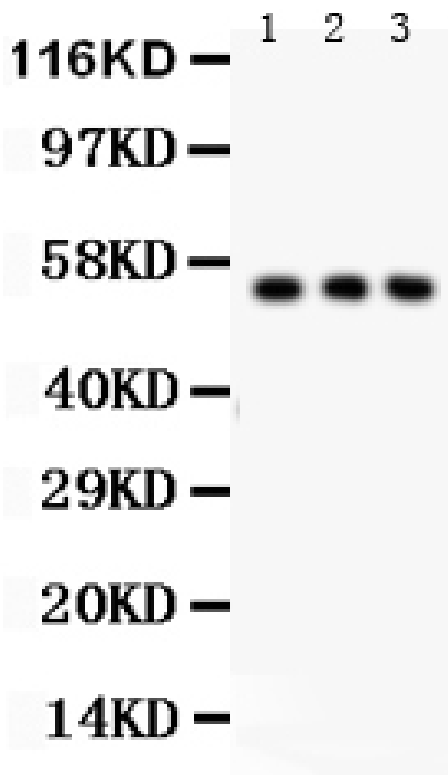
Background Information

SLC2A2, also known as Glucose transporter 2 (GLUT2), is a transmembrane carrier protein that enables protein facilitated glucose movement across cell membranes. This gene encodes an integral plasma membrane glycoprotein of the liver, islet beta cells, intestine, and kidney epithelium. The encoded protein mediates facilitated bidirectional glucose transport. Because of its low affinity for glucose, it has been suggested as a glucose sensor. Mutations in this gene are associated with susceptibility to diseases, including Fanconi-Bickel syndrome and noninsulin-dependent diabetes mellitus (NIDDM). Alternative splicing results in multiple transcript variants of this gene.

Reference

Anti-GLUT2/SLC2A2 Antibody被引用在4文献中。

Selected Validation Data



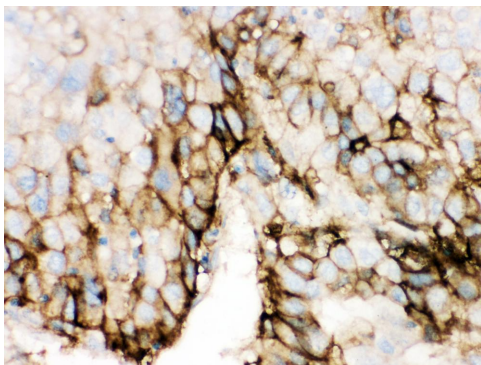
Western blot analysis of GLUT2/SLC2A2 using anti-GLUT2/SLC2A2 antibody (PB9436). The sample well of each lane was loaded with 30 ug of sample under reducing conditions.

Lane 1: PANC whole cell lysates,

Lane 2: A549 whole cell lysates,

Lane 3: HT1080 whole cell lysates.

After electrophoresis, proteins were transferred to a membrane. Then the membrane was incubated with rabbit anti-GLUT2/SLC2A2 antigen affinity purified polyclonal antibody (PB9436) at a dilution of 1:1000 and probed with a goat anti-rabbit IgG-HRP secondary antibody (Catalog # BA1054). The signal is developed using ECL Plus Western Blotting Substrate (Catalog # AR1197). A specific band was detected for GLUT2/SLC2A2 at approximately 57 kDa. The expected band size for GLUT2/SLC2A2 is at 57 kDa.



IHC analysis of GLUT2/SLC2A2 using anti-GLUT2/SLC2A2 antibody (PB9436).

GLUT2/SLC2A2 was detected in a paraffin-embedded section of human liver cancer tissue. Biotinylated goat anti-rabbit IgG was used as secondary antibody. The tissue section was incubated with rabbit anti-GLUT2/SLC2A2 Antibody (PB9436) at a dilution of 1:200 and developed using Streptavidin-Biotin-Complex (SABC) (Catalog # SA1022) with DAB (Catalog # AR1027) as the chromogen.