

Basic Information

Product Name	Anti-CD41/Integrin Alpha 2B/ITGA2B Antibody	
Gene Name	ITGA2B	
Source	Rabbit	
Clonality	Polyclonal	
Isotype	IgG	
Species Reactivity	human, mouse, rat	
Tested Application	WB, IHC	
Contents	500 ug/ml antibody with PBS, 0.02% NaN ₃ , 1 mg/ml BSA and 50% glycerol.	
Immunogen	A synthetic peptide corresponding to a sequence at the C-terminus of human ITGA2B, different from the related mouse sequence by four amino acids.	
Concentration	500 ug/ml	
Purification	Immunogen affinity purified.	
Observed MW	120-135 kDa	
Dilution Ratios	Western blot (WB): 1:500-2000 Immunohistochemistry (IHC): 1:50-400 (Boiling the paraffin sections in 10mM citrate buffer, pH6.0, or PH8.0 EDTA repair liquid for 20 mins is required for the staining of formalin/paraffin sections.) Optimal working dilutions must be determined by end user.	

Storage

12 months from date of receipt, -20°C as supplied.

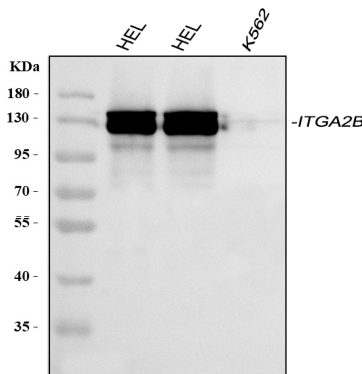
Background Information

Integrin alpha-IIb is a protein that in humans is encoded by the ITGA2B gene. It is mapped to 17q21.32. Integrins are heterodimeric integral membrane proteins composed of an alpha chain and a beta chain. Alpha chain 2b undergoes post-translational cleavage to yield disulfide-linked light and heavy chains that join with beta 3 to form a fibrinogen receptor expressed in platelets that plays a crucial role in coagulation. Mutations that interfere with this role result in thrombasthenia. In addition to adhesion, integrins are known to participate in cell-surface mediated signalling.

Reference

Anti-CD41/Integrin Alpha 2B/ITGA2B Antibody被引用在6文献中。

Selected Validation Data



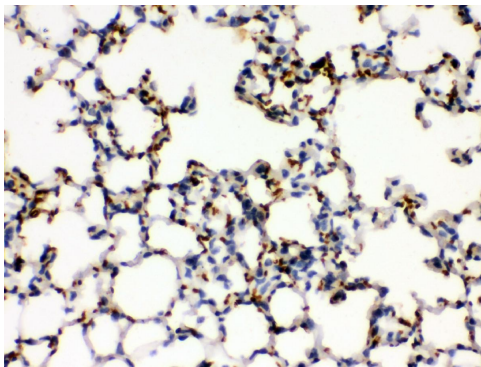
Western blot analysis of anti- ITGA2B antibody (PB9647). The sample well of each lane was loaded with 30ug of sample under reducing conditions.

Lane 1: human HEL whole cell lysates,

Lane 2: human HEL whole cell lysates,

Lane 3: human K562 whole cell lysates.

Use rabbit anti- ITGA2B 1:1000, probed with a goat anti-rabbit IgG-HRP secondary antibody. The signal is developed using an Enhanced Chemiluminescent detection (ECL) kit (Catalog#EK1002). A specific band was detected for ITGA2B at approximately 120-135KD. The expected band size for ITGA2B is at 113KD.



IHC analysis of CD41/Integrin Alpha 2B/ITGA2B using anti-CD41/Integrin Alpha 2B/ITGA2B antibody (PB9647).

CD41/Integrin Alpha 2B/ITGA2B was detected in a paraffin-embedded section of mouse lung tissue. The tissue section was incubated with rabbit anti-CD41/Integrin Alpha 2B/ITGA2B Antibody (PB9647) at a dilution of 1:200 and developed using HRP Conjugated Rabbit IgG Super Vision Assay Kit (Catalog # SV0002) with DAB (Catalog # AR1027) as the chromogen.