

## Basic Information

<b>Product Name</b>	Anti-Lysozyme/LYZ Antibody	
<b>Gene Name</b>	LYZ	
<b>Source</b>	Rabbit	
<b>Clonality</b>	Polyclonal	
<b>Isotype</b>	IgG	
<b>Species Reactivity</b>	human, mouse, rat	
<b>Tested Application</b>	WB, IHC, IF	
<b>Contents</b>	500 ug/ml antibody with PBS, 0.02% NaN3, 1 mg/ml BSA and 50% glycerol.	
<b>Immunogen</b>	A synthetic peptide corresponding to a sequence at the C-terminus of human Lysozyme.	
<b>Concentration</b>	500 ug/ml	
<b>Purification</b>	Immunogen affinity purified.	
<b>Observed MW</b>	17 kDa	
<b>Dilution Ratios</b>	Western blot (WB):	1:500-2000
	Immunohistochemistry (IHC):	1:50-400
	Immunofluorescence (IF):	1:50-400
	(Boiling the paraffin sections in 10mM citrate buffer,pH6.0,or PH8.0 EDTA repair liquid for 20 mins is required for the staining of formalin/paraffin sections.) Optimal working dilutions must be determined by end user.	

## Storage

12 months from date of receipt, -20°C as supplied.

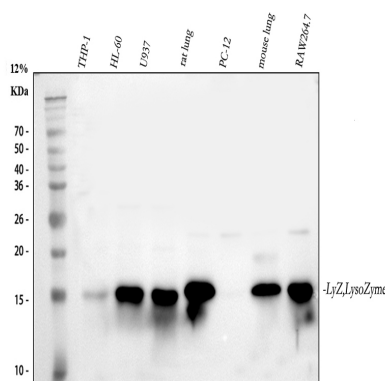
## Background Information

In humans, the lysozyme enzyme is encoded by the LYZ gene. This gene encodes human lysozyme, whose natural substrate is the bacterial cell wall peptidoglycan (cleaving the beta [1-4] glycosidic linkages between N-acetylmuramic acid and N-acetylglucosamine). Lysozyme is one of the antimicrobial agents found in human milk, and is also present in spleen, lung, kidney, white blood cells, plasma, saliva, and tears. The protein has antibacterial activity against a number of bacterial species. Missense mutations in this gene have been identified in heritable renal amyloidosis.

## Reference

Anti-Lysozyme/LYZ Antibody被引用在2文献中。

## Selected Validation Data



Western blot analysis of Lysozyme/LYZ using anti-Lysozyme/LYZ antibody (PB9663). The sample well of each lane was loaded with 30 ug of sample under reducing conditions.

Lane 1: human THP-1 whole cell lysates,

Lane 2: human HL-60 whole cell lysates,

Lane 3: human U937 whole cell lysates,

Lane 4: rat lung tissue lysates,

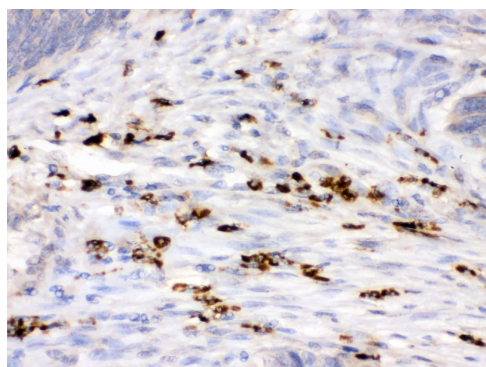
Lane 5: rat PC-12 whole cell lysates,

Lane 6: mouse lung tissue lysates,

Lane 7: mouse RAW264.7 whole cell lysates.

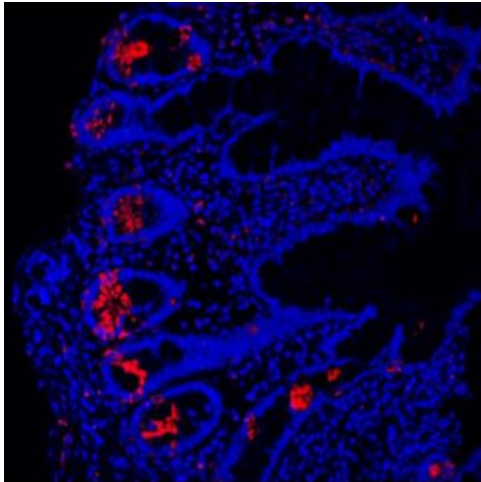
After electrophoresis, proteins were transferred to a membrane.

Then the membrane was incubated with rabbit anti-Lysozyme/LYZ antigen affinity purified polyclonal antibody (PB9663) at a dilution of 1:1000 and probed with a goat anti-rabbit IgG-HRP secondary antibody (Catalog # BA1054). The signal is developed using ECL Plus Western Blotting Substrate (Catalog # AR1197). A specific band was detected for Lysozyme/LYZ at approximately 15-17 kDa. The expected band size for Lysozyme/LYZ is at 17 kDa.



IHC analysis of Lysozyme/LYZ using anti-Lysozyme/LYZ antibody (PB9663) .

Lysozyme/LYZ was detected in a paraffin-embedded section of human intestinal cancer tissue. The tissue section was incubated with rabbit anti-Lysozyme/LYZ Antibody (PB9663) at a dilution of 1:200 and developed using HRP Conjugated Rabbit IgG Super Vision Assay Kit (Catalog # SV0002) with DAB (Catalog # AR1027) as the chromogen.



IF analysis of Lysozyme/LYZ using anti-Lysozyme/LYZ antibody (PB9663).

Lysozyme/LYZ was detected in a paraffin-embedded section of human ileum tissue. The tissue section was incubated with rabbit anti-Lysozyme/LYZ Antibody (PB9663) at a dilution of 1:100. Cy3-conjugated Anti-rabbit IgG Secondary Antibody (red)(Catalog#BA1032) was used as secondary antibody. The section was counterstained with DAPI (Catalog # AR1176) (Blue).