

Basic Information

Product Name	Anti-CHEK2 Antibody
Gene Name	CHEK2
Source	Rabbit
Clonality	Polyclonal
Isotype	IgG
Species Reactivity	human, mouse, rat
Tested Application	WB, IHC
Contents	500 ug/ml antibody with PBS, 0.02% NaN3, 1 mg/ml BSA and 50% glycerol.
Immunogen	A synthetic peptide corresponding to a sequence at the C-terminus of human Chk2, different from the related mouse sequence by four amino acids.
Concentration	500 ug/ml
Purification	Immunogen affinity purified.
Observed MW	61 kDa
Dilution Ratios	Western blot (WB): 1:500-2000 Immunohistochemistry (IHC): 1:50-400 (Boiling the paraffin sections in 10mM citrate buffer, pH6.0, or PH8.0 EDTA repair liquid for 20 mins is required for the staining of formalin/paraffin sections.) Optimal working dilutions must be determined by end user.

Storage

12 months from date of receipt, -20°C as supplied.

Background Information

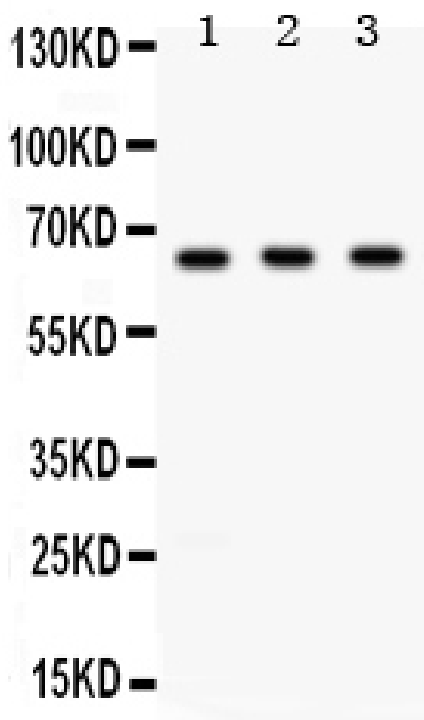
CHK2, a protein kinase that is activated in response to DNA damage, is involved in cell cycle arrest. Mapped on 22q12.1, CHK2 has a potential regulatory region rich in SQ and TQ amino acid pairs. It regulates BRCA1 function after DNA damage by phosphorylating serine-988 of BRCA1. Additionally, CHK2 can be modified by phosphorylation and activated in response to ionizing radiation, and can be also modified in response to hydroxyurea treatment. Furthermore, oligomerization of CHEK2 increases the efficiency of transautophosphorylation, resulting in the release of active CHEK2 monomers that proceed to enforce checkpoint control in irradiated cells. Moreover, CHK2 is a tumor suppressor gene conferring predisposition to sarcoma, breast cancer, and brain tumors, and that their observations

provided a link between the central role of p53 inactivation in human cancer and the well-defined G2 checkpoint in yeast. There is a wide expression of small amounts of CHK2 mRNA with larger amounts in human testis, spleen, colon, and peripheral blood leukocytes.

Reference

Anti-CHEK2 Antibody 被引用在1文献中。

Selected Validation Data



Western blot analysis of CHEK2 using anti-CHEK2 antibody (PB9692). The sample well of each lane was loaded with 30 ug of sample under reducing conditions.

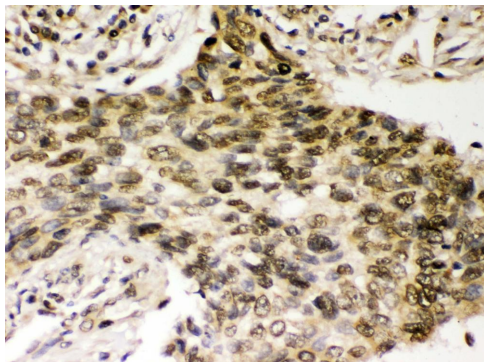
Lane 1: Rat spleen tissue lysates,

Lane 2: Mouse testis tissue lysates,

Lane 3: SW620 whole cell lysates.

After electrophoresis, proteins were transferred to a membrane.

Then the membrane was incubated with rabbit anti-CHEK2 antigen affinity purified polyclonal antibody (PB9692) at a dilution of 1:1000 and probed with a goat anti-rabbit IgG-HRP secondary antibody (Catalog # BA1054). The signal is developed using ECL Plus Western Blotting Substrate (Catalog # AR1197). A specific band was detected for CHEK2 at approximately 61 kDa. The expected band size for CHEK2 is at 61 kDa.



IHC analysis of CHEK2 using anti-CHEK2 antibody (PB9692). CHEK2 was detected in a paraffin-embedded section of human lung cancer tissue. Biotinylated goat anti-rabbit IgG was used as secondary antibody. The tissue section was incubated with rabbit anti-CHEK2 Antibody (PB9692) at a dilution of 1:200 and developed using Streptavidin-Biotin-Complex (SABC) (Catalog # SA1022) with DAB (Catalog # AR1027) as the chromogen.